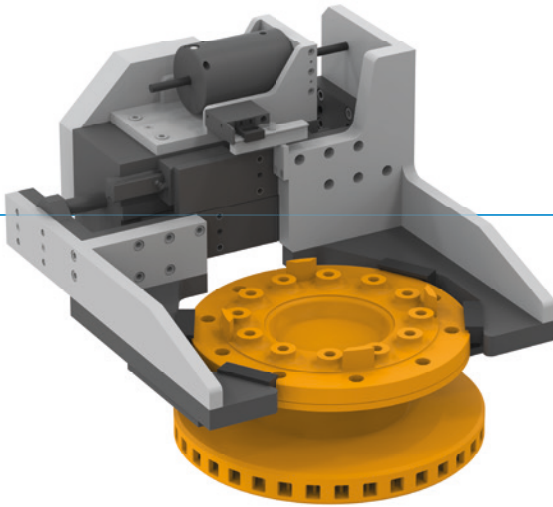


HANDLING SYSTEM FOR WHEEL HUBS

Z01SYS114185

▶ PRODUCT INFORMATION



- ▶ The product is designed to handle different variants of wheel hubs during assembly and then place them in a rack system for intermediate storage. Due to the high part weight and the side gripper arrangement, an outstandingly rigid gripping concept based on a standard Zimmer gripper of the GH7600 series has been designed. This enables positionally accurate depositing and pick-up in the individual process steps. An additionally integrated standard clamping element in conjunction with form-fitting gripper fingers ensures that the workpiece remains secure in case of a pressure loss.

▶ CHALLENGE

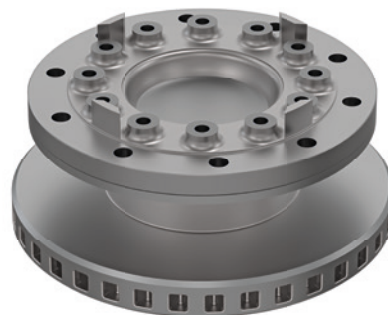
- ▶ Large differences in diameter at the gripping points
- ▶ Detection of the workpiece variant
- ▶ Workpiece secured in the event of a loss in pressure

▶ SOLUTION

- ▶ Zimmer standard long stroke gripper
- ▶ Integrated position measurement system
- ▶ Zimmer safety clamp

▶ WORKPIECE

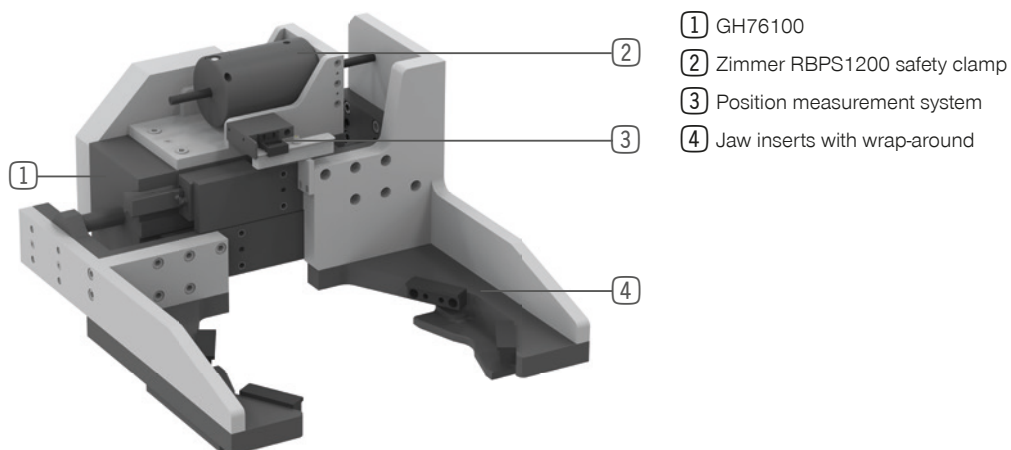
- ▶ Wheel hub
- ▶ Weight up to 100 kg
- ▶ Diameter 286 - 382 mm



▶ TECHNICAL DATA

Product	Wheel hub
Gripping technology	Form fit
Workpiece weight [kg]	82
System weight [kg]	120
Drive type	Pneumatic

▶ FUNCTIONS IN DETAIL



▶ MORE INFORMATION/CROSS REFERENCES

- ▶ Railway wheel and brake disk
Z01SYS114183

