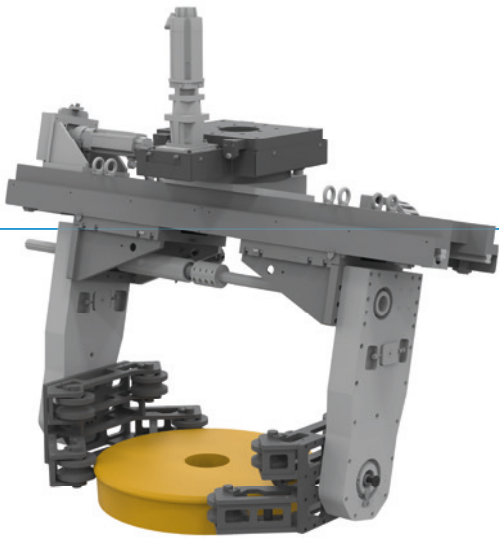


# HANDLING SYSTEM FOR RAILWAY AXLES

## Z01SYS114183

### ▶ PRODUCT INFORMATION



- ▶ Handling system for loading and unloading machining centers with different types of railway wheels and brake discs. Corresponding to the part geometry, the wheels are picked up via a two-stage jaw set. Servoelectric swiveling axes above the gripper system and servo swiveling axes integrated into the gripper fingers ensure smooth re-orientation of the workpieces in the gripper. The securing of the workpieces in the gripper is implemented via the self-locking mechanism of the spindles.

### ▶ CHALLENGE

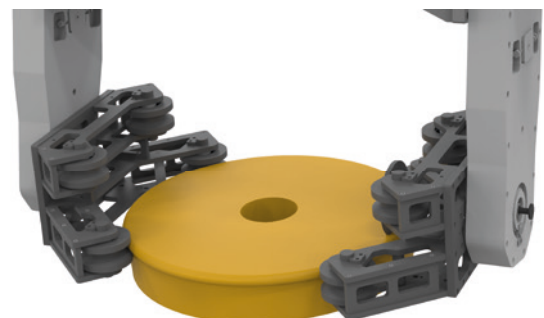
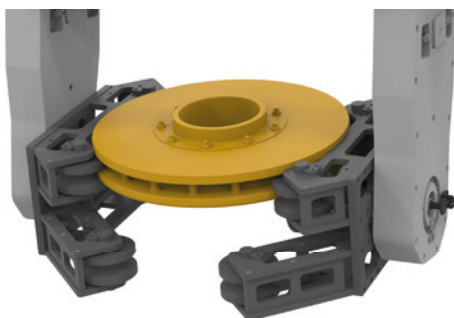
- ▶ High workpiece weight
- ▶ High torques for the swivel jaw
- ▶ Limited carrying capacity of the gantry
- ▶ Gripping brake discs and railway wheels without changing jaws or grippers
- ▶ Workpiece holder

### ▶ SOLUTION

- ▶ A-axis with 500 Nm drive
- ▶ C-axis
- ▶ Weight-optimized design
- ▶ Two-stage jaw set according to the respective part geometry
- ▶ Self-limiting threaded spindles in the gripper module

### ▶ WORKPIECE

- ▶ Workpiece weight 550 kg
- ▶ Diameter range of 640 – 1000 mm

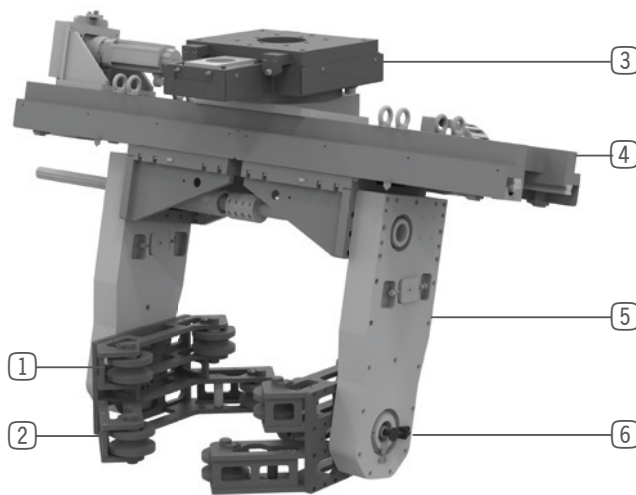


## ▶ TECHNICAL DATA

Product	Railway wheel & brake disk
Gripping technology	Form fit
Workpiece weight [kg]	550
System weight [kg]	800
Drive type	Servo-electric



## ▶ FUNCTIONS IN DETAIL



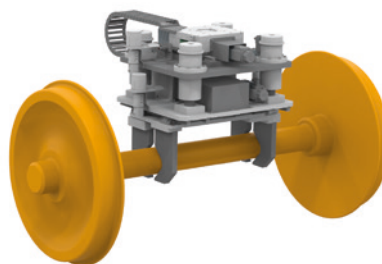
- ① Jaw set for brake disks
- ② Jaw set for wheels
- ③ Servo swivel unit (C-axis)
- ④ Gripper module
- ⑤ Servo swivel jaw (A-axis)
- ⑥ Part presence sensing

## ▶ MORE INFORMATION/CROSS REFERENCES

▶ Railway side frame  
KOMP6026



▶ Railway axle  
01SYS002696-01



▶ Railway axle  
01SYS001223-01

