

# TOOL CHANGERS

## SERIES WWR1000

### ▶ PRODUCT ADVANTAGES



#### ▶ **Secure hold during pressure drop**

A redundant system, created by the combination of spring accumulator and a self locking mechanism, guarantees a safe machine

#### ▶ **Handling weight from up to one tonne**

Automated changes can be carried out by this changer with process reliability even with the largest robots

#### ▶ **Inexhaustible variety of media transfer systems**

No matter which medium you would like to transmit, we will draw from our wealth of experience in implementing projects and find a solution to suit your needs!

### ▶ THE BEST PRODUCT FOR YOUR APPLICATION



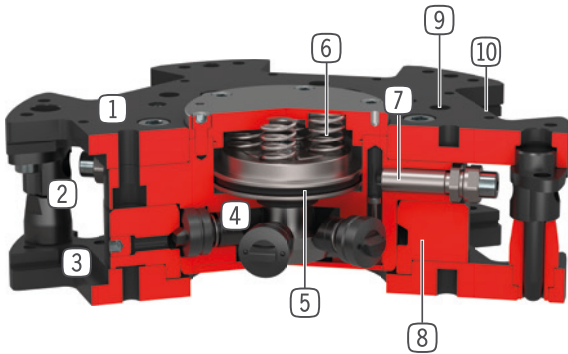
#### ▶ **Our products welcome the challenge!**

Extreme conditions, all over the world—our tried and tested components and systems give you endless possibilities.

Find the best product for your specific use:

[www.zimmer-group.com](http://www.zimmer-group.com)

## ► BENEFITS IN DETAIL



- ① **Fix part**  
- For robot side assembly
- ② **Centering pins**  
- twist protection and positioning for loose part
- ③ **Loose part**  
- for tool side assembly
- ④ **Locking bolt**  
- adapted to the clamping sleeve
- ⑤ **Drive**  
- double-acting pneumatic cylinder
- ⑥ **Integrated spring**  
- energy storage in case of drop in pressure
- ⑦ **Piston position sensing**  
- via inductive proximity switch
- ⑧ **Locking sleeve**
- ⑨ **Robot flange**  
- partial mounting circle in accordance with EN ISO 9409-1
- ⑩ **Mounting for energy element**

## ► TECHNICAL DATA

Installation size	Connecting flange according EN ISO 9409-1	Electrical energy transfer	Fluid energy transfer
<b>WWR1160</b>	TK 160	optional	optional
<b>WWR1200</b>	TK 200	optional	optional

## ► FURTHER INFORMATION IS AVAILABLE ONLINE



All information just a click away at: [www.zimmer-group.com](http://www.zimmer-group.com). Find data, illustrations, 3D models and operating instructions for your installation size using the order number for your desired product. Quick, clear and always up-to-date.

# TOOL CHANGERS

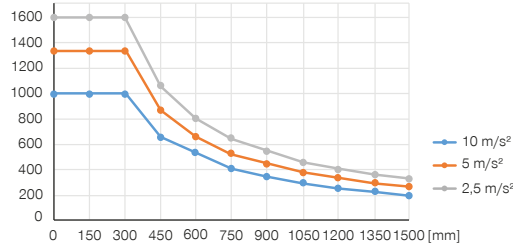
## INSTALLATION SIZE WWR1200

### ▶ PRODUCT SPECIFICATIONS



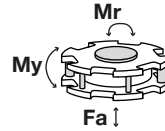
#### ▶ Variable installation position

Shows the maximum handling weight depending on acceleration and lever arm. Does not replace the technical design.  
[kg]



#### ▶ Forces and moments

Shows static forces and moments which may impact on the tool changer when locked.



Mr [Nm]	12000
My [Nm]	12000
Fa [N]	75000

### ▶ INCLUDED IN DELIVERY



2 [piece]  
Mounting bracket for proximity switch  
**ZUB0014**

### ▶ RECOMMENDED ACCESSORIES



#### ENERGY SUPPLY



**GV1-8X8**  
Straight Fittings - Quick Connect Style



#### CONNECTIONS / OTHER



Energy elements and accessories for tool changer



#### SENSORS



**NJ8-E2S-17**  
Inductive proximity switch - Connector M8



**KAG500**  
Plug-in connector Straight Cable 5m - Socket M8 (female)



**ZUB0022**  
Programming pins



**ALSR1-1200**  
Storage station

**Order no.**

Connecting flange according EN ISO 9409-1  
 Electrical energy transfer  
 Fluid energy transfer  
 Self locking mechanism when locking  
 Locking stroke [mm]  
 Repetition accuracy +/- [mm]  
 Offset at coupling max. in X,Y [mm]  
 Operating pressure [bar]  
 Nominal operating pressure [bar]  
 Operating temperature [°C]  
 Air volume per cycle [cm³]  
 Weight [kg]

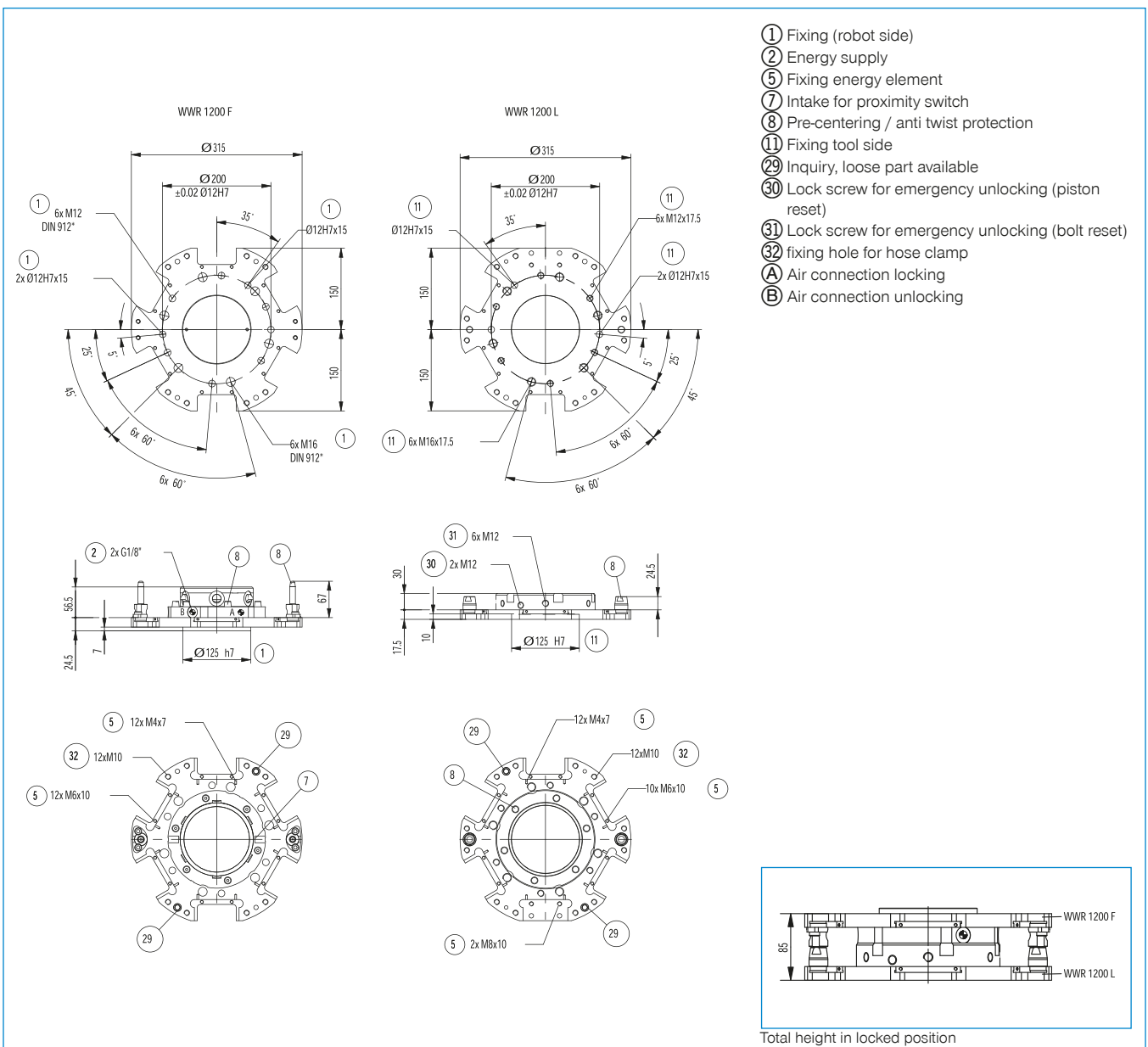
► **Technical data**

**WWR1200F**

TK 200  
 optional  
 optional  
 mechanical  
 1  
 0.02  
 3.0  
 6 ... 8  
 6  
 5 ... +80  
 83  
 15

**WWR1200L**

TK 200  
 optional  
 optional  
 mechanical  
 0.02  
 3.0  
 6 ... 8  
 6  
 5 ... +80  
 83  
 8.6



# ENERGY ELEMENTS FOR TOOL CHANGER

## SIZES WWR1160 / WWR1200

### ▶ CONNECTION DIAGRAM

