

MODULAR CONSTRUCTION SYSTEM

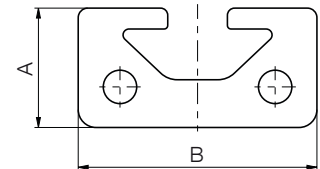
SERIES MCS

► PROFILE 10X20



► Special features

- Groove width 5mm
- Standard length 2000 mm
- Other lengths available on request



Order no.

► Technical Data

SO-10102000

Dimension A [mm]

10

Dimension B [mm]

20

Dimension L [mm]

2000

Weight [g/m]

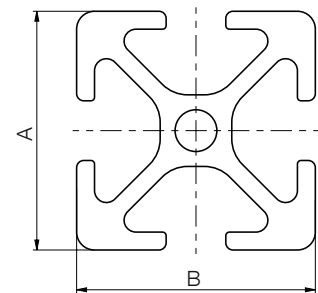
350

► PROFILE 20X20



► Special features

- Groove width 5mm
- Standard length 2000 mm
- Other lengths available on request



Order no.

► Technical Data

SO-10402000

Dimension A [mm]

20

Dimension B [mm]

20

Dimension L [mm]

2000

Weight [g/m]

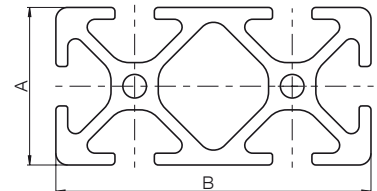
490

► PROFILE 20X40



► Special features

- Groove width 5mm
- Standard length 2000 mm
- Other lengths available on request



Order no.

► Technical Data

SO-10502000

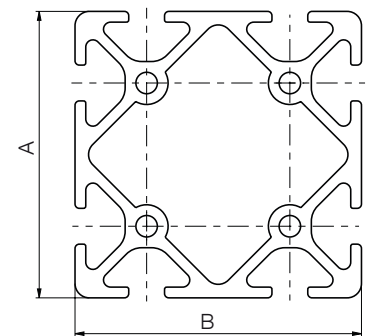
Dimension A [mm]	20
Dimension B [mm]	40
Dimension L [mm]	2000
Weight [g/m]	950

► PROFILE 40X40



► Special features

- Groove width 5mm
- Standard length 2000 mm
- Other lengths available on request



► Technical Data

SO-10802000

Order no.	SO-10802000
Dimension A [mm]	40
Dimension B [mm]	40
Dimension L [mm]	2000
Weight [g/m]	1810

MODULAR CONSTRUCTION SYSTEM

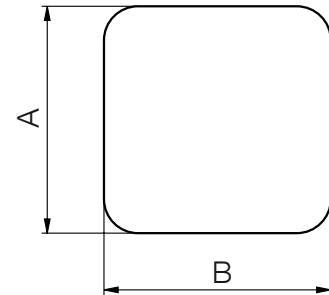
SERIES MCS

▶ COVER CAP



▶ Special features

To cover the profile section ends



▶ Technical Data

Order no.	SO-11110020	SO-11120020	SO-11120040	SO-11140040
Dimension A [mm]	10	20	20	40
Dimension B [mm]	20	20	40	40

▶ CROSS CLAMP

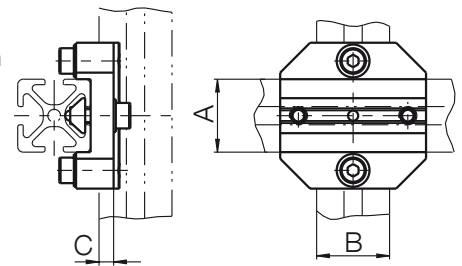


▶ Special features

On both sides, the profiles are inserted into a groove. So a very high angle stability is ensured

Releasing the fixing on one profile side, the profile can be moved parallelly and set

The profile may be shifted in parallel and adjusted by loosening the mount on one side of the profile



▶ Technical Data

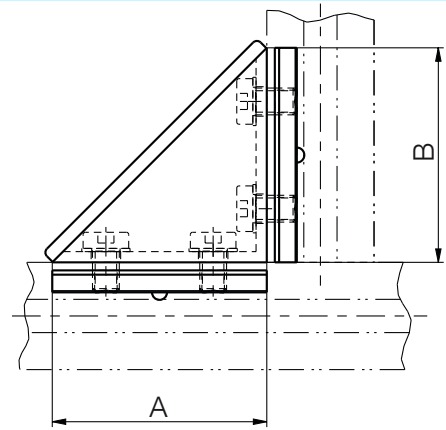
Order no.	SO-13120020	SO-13120040	SO-13140040
Dimension A [mm]	20	20	40
Dimension B [mm]	20	40	40
Dimension C [mm]	4	4	4
Weight [g]	48	73	109

▶ ANGLE FIXING



▶ Special features

For simple 90° angle fixing with low stresses



▶ Technical Data

Order no.	SO-13420020	SO-13440040
Dimension A [mm]	20	40
Dimension B [mm]	20	40
Weight [g]	25	60

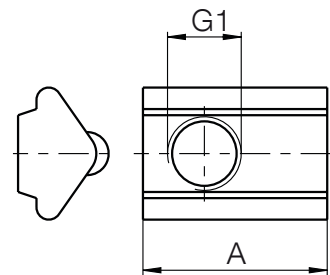
▶ SLOT NUT PIVOTING



▶ Special features

All Slot nuts made of galvanised steel with strip for centering

Can be pivoted into any section of profile groove for normal fixing



▶ Technical Data

Order no.	SO-14104000	SO-14105000
G1	M4	M5
Dimension A [mm]	12	12
Weight [g]	2	2

MODULAR CONSTRUCTION SYSTEM

SERIES MCS

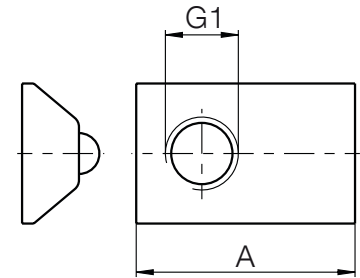
▶ SLOT NUT WITH BALL



▶ Special features

All Slot nuts made of galvanised steel with wide profile guiding

Inserted into the profile slot from the side for high stresses



Order no.

▶ Technical Data

SO-14305000

G1

M5

Dimension A [mm]

15

Weight [g]

4

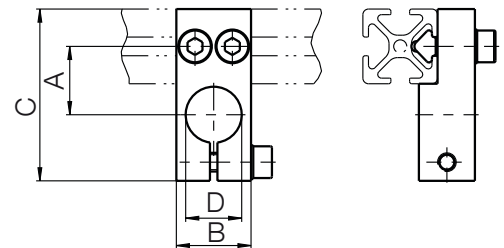
▶ CLAMP



▶ Special features

Rigid clamp for fixing to all profiles

Standard with pivoting Slot nut and screws



▶ Technical Data

Order no.

SO-23110017

SO-23115019

SO-23120022

Dimension A [mm]

17

19

22

Dimension B [mm]

16

20

25

Dimension C [mm]

39

46

51

Dimension D [mm]

10

15

20

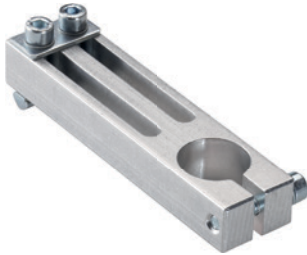
Weight [g]

20

27

46

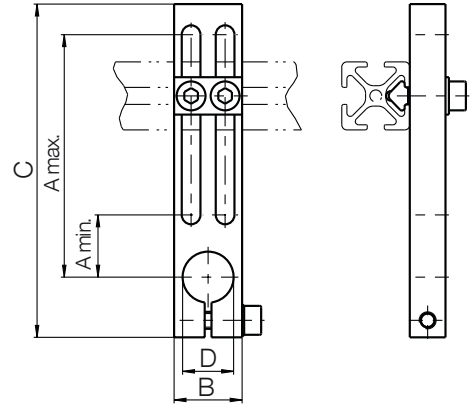
▶ CLAMP ADJUSTABLE



▶ Special features

Adjustable clamps for fixing to all profiles

Standard with pivoting Slot nut and screws



▶ Technical Data

Order no.	SO-23210057	SO-23215070	SO-23220072
Dimension A min. [mm]	17	19	22
Dimension A max. [mm]	57	70	72
Dimension B [mm]	16	20	25
Dimension C [mm]	81	98	103
Dimension D [mm]	10	15	20
Weight [g]	47	53	85

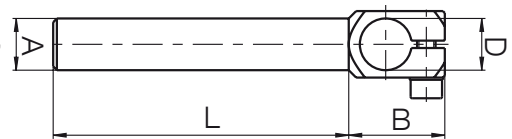
▶ ANGLE PIECE



▶ Special features

For adapting the following elements to right-angled surfaces

Suitable for jointed angle pieces, suction fingers and tongs



▶ Technical Data

Order no.	SO-25110030	SO-25110060	SO-25110090	SO-25115045	SO-25115090
Dimension A [mm]	10	10	10	15	15
Dimension B [mm]	20	20	20	27	27
Dimension D [mm]	10	10	10	15	15
Dimension L [mm]	30	60	90	45	90
Weight [g]	15	19	23	35	47

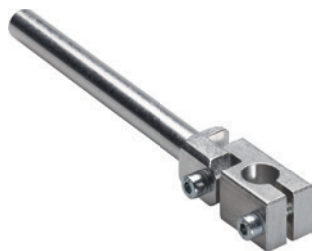
▶ Technical Data

Order no.	SO-25115130	SO-25120045	SO-25120090	SO-25120130
Dimension A [mm]	15	20	20	20
Dimension B [mm]	27	33	33	33
Dimension D [mm]	15	20	20	20
Dimension L [mm]	130	45	90	130
Weight [g]	55	68	90	114

MODULAR CONSTRUCTION SYSTEM

SERIES MCS

▶ JOINT ANGLE PIECE

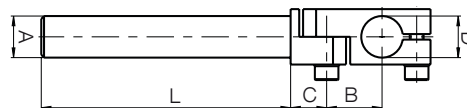


▶ Special features

For adapting the following elements to inclined surfaces

Suitable for angle pieces and suction fingers

Joint swivels through 180°



▶ Technical Data

Order no.	SO-26110030	SO-26110060	SO-26110090	SO-26115045	SO-26115090
Dimension A [mm]	10	10	10	15	15
Dimension B [mm]	16	16	16	22	22
Dimension C [mm]	11	11	11	14	14
Dimension D [mm]	10	10	10	15	15
Dimension L [mm]	30	60	90	45	90
Weight [g]	26	32	39	60	70

▶ Technical Data

Order no.	SO-26115130	SO-26120045	SO-26120090	SO-26120130
Dimension A [mm]	15	20	20	20
Dimension B [mm]	22	26	26	26
Dimension C [mm]	14	16	16	16
Dimension D [mm]	15	20	20	20
Dimension L [mm]	130	45	90	130
Weight [g]	78	118	144	168

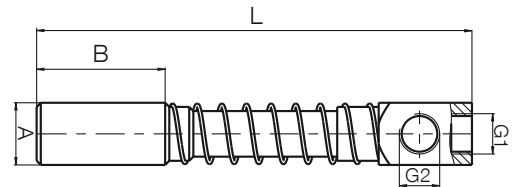
▶ SUCTION FINGER SPRING-LOADED



▶ Special features

Spring-loaded suction cups for contact surfaces at right angles to suction cup

Suitable for mini and bellows cups



▶ Technical Data

Order no.	SO-30311010	SO-30311020	SO-30322015	SO-30322035	SO-30323015
G1	M5	M5	G1/8"	G1/8"	G1/4"
G2	M5	M5	G1/8"	G1/8"	G1/8"
Dimension A [mm]	10	10	15	15	15
Dimension B [mm]	26	26	32	32	32
Dimension L min. [mm]	48	56	65	70	67
Dimension L max. [mm]	58	76	80	105	82
Weight [g]	12	14	32	35	39

▶ Technical Data

Order no.	SO-30323035	SO-30332020	SO-30332040	SO-30333020	SO-30333040
G1	G1/4"	G1/8"	G1/8"	G1/4"	G1/4"
G2	G1/8"	G1/8"	G1/8"	G1/4"	G1/4"
Dimension A [mm]	15	20	20	20	20
Dimension B [mm]	32	53	53	53	53
Dimension L min. [mm]	72	89	95	93	99
Dimension L max. [mm]	107	109	135	103	139
Weight [g]	42	74	90	61	77

MODULAR CONSTRUCTION SYSTEM

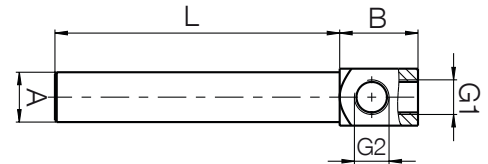
SERIES MCS

► SUCTION FINGER



► Special features

Rigid suction finger for rectangular contact surfaces to suction cup
 Suitable for mini and bellows cups



► Technical Data

Order no.	SO-30111030	SO-30111060	SO-30111090	SO-30122045	SO-30122090
G1	M5	M5	M5	G1/8"	G1/8"
G2	M5	M5	M5	G1/8"	G1/8"
Dimension A [mm]	10	10	10	15	15
Dimension B [mm]	14	14	14	20	20
Dimension L [mm]	30	60	90	45	90
Weight [g]	9	14	21	26	38

► Technical Data

Order no.	SO-30122130	SO-30123045	SO-30123090	SO-30123130	SO-30132045
G1	G1/8"	G1/4"	G1/4"	G1/4"	G1/8"
G2	G1/8"	G1/8"	G1/8"	G1/8"	G1/8"
Dimension A [mm]	15	15	15	15	20
Dimension B [mm]	20	24	24	24	24
Dimension L [mm]	130	45	90	130	45
Weight [g]	49	30	42	50	57

► Technical Data

Order no.	SO-30132090	SO-30132130	SO-30133045	SO-30133090	SO-30133130
G1	G1/8"	G1/8"	G1/4"	G1/4"	G1/4"
G2	G1/8"	G1/8"	G1/4"	G1/4"	G1/4"
Dimension A [mm]	20	20	20	20	20
Dimension B [mm]	24	24	28	28	28
Dimension L [mm]	90	130	45	90	130
Weight [g]	83	109	52	79	105

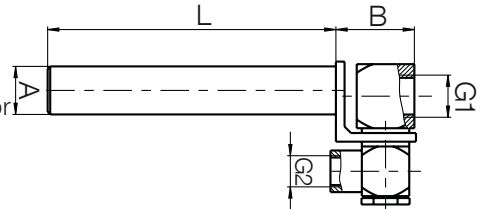
▶ SUCTION FINGER ROTATABLE



▶ Special features

Suction fingers with swivel head for inclined surfaces to suction cup, suitable for mini and bellows cups

The suction cup can be adjusted for inclined surfaces up to 45°



Order no.	▶ Technical Data				
	SO-30211030	SO-30211060	SO-30211090	SO-30222045	SO-30222090
G1	M5	M5	M5	G1/8"	G1/8"
G2	M5	M5	M5	G1/8"	G1/8"
Dimension A [mm]	10	10	10	15	15
Dimension B [mm]	16	16	16	24	24
Dimension L [mm]	30	60	90	45	90
Weight [g]	17	21	26	61	73

Order no.	▶ Technical Data				
	SO-30222130	SO-30223045	SO-30223090	SO-30223130	SO-30232045
G1	G1/8"	G1/4"	G1/4"	G1/4"	G1/8"
G2	G1/8"	G1/8"	G1/8"	G1/8"	G1/8"
Dimension A [mm]	15	15	15	15	20
Dimension B [mm]	24	25	25	25	30
Dimension L [mm]	130	45	90	130	45
Weight [g]	83	65	78	88	81

Order no.	▶ Technical Data				
	SO-30232090	SO-30232130	SO-30233045	SO-30233090	SO-30233130
G1	G1/8"	G1/8"	G1/4"	G1/4"	G1/4"
G2	G1/8"	G1/8"	G1/4"	G1/4"	G1/4"
Dimension A [mm]	20	20	20	20	20
Dimension B [mm]	30	30	30	30	30
Dimension L [mm]	90	130	45	90	130
Weight [g]	116	138	104	139	161

MODULAR CONSTRUCTION SYSTEM

SERIES MCS

► SUCTION FINGER ROTATABLE



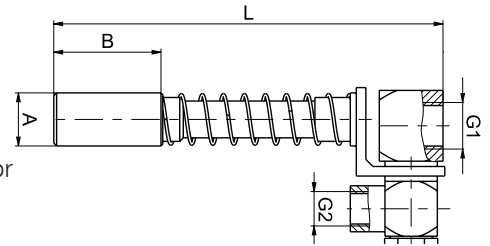
► Special features

Spring-loaded suction finger with swivel head for contact inclined surfaces to suction cup

Suitable for mini and bellows cups

The suction cup can be adjusted for inclined surfaces up to 45°

Secured against rotation



► Technical Data

Order no.	SO-30411010	SO-30411020	SO-30422015	SO-30422035	SO-30423015
G1	M5	M5	G1/8"	G1/8"	G1/4"
G2	M5	M5	G1/8"	G1/8"	G1/8"
Dimension A [mm]	10	10	15	15	15
Dimension B [mm]	26	26	32	32	32
Dimension L min. [mm]	52	60	70	75	72
Dimension L max. [mm]	62	80	85	110	87
Weight [g]	29	30	76	77	81

► Technical Data

Order no.	SO-30423035	SO-30432020	SO-30432040	SO-30433020	SO-30433040
G1	G1/4"	G1/8"	G1/8"	G1/4"	G1/4"
G2	G1/8"	G1/8"	G1/8"	G1/4"	G1/4"
Dimension A [mm]	15	20	20	20	20
Dimension B [mm]	32	53	53	53	53
Dimension L min. [mm]	77	97	103	99	105
Dimension L max. [mm]	112	117	143	119	145
Weight [g]	82	145	146	168	169

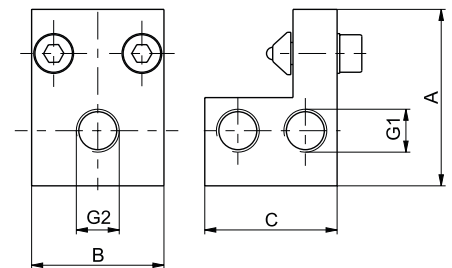
► AIR DISTRIBUTOR 4-CONNECTIONS



► Special features

1 air cycle, 4 connections

To distribute compressed air and vacuum



► Technical Data

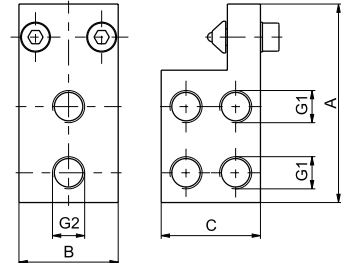
Order no.	SO-35101004
G1	G1/8"
G2	G1/8"
Dimension A [mm]	40
Dimension B [mm]	30
Dimension C [mm]	30
Weight [g]	86

► AIR DISTRIBUTOR 2X4-CONNECTIONS



► Special features

2 air cycle, 2x4 connections
To distribute compressed air and vacuum



Order no.

► Technical Data

SO-35102004

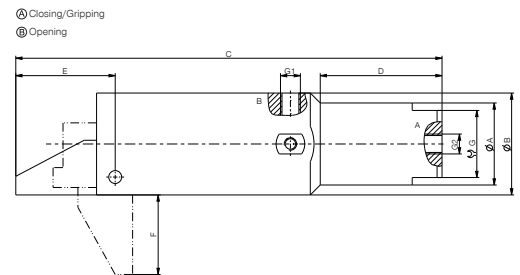
G1	G1/8"
G2	G1/8"
Dimension A [mm]	60
Dimension B [mm]	30
Dimension C [mm]	30
Weight [g]	133

► GRIPPER FINGERS



► Special features

Swivel angle 90°
Torque 90 Ncm



Order no.

► Technical Data

SO-43120090

G1	M5
G2	M5
Dimension A [mm]	20
Dimension B [mm]	25
Dimension C [mm]	105
Dimension D [mm]	30
Dimension E [mm]	24
Dimension F [mm]	19
Dimension G [mm]	17
Weight [g]	130