

INDUSTRIAL SHOCK ABSORBERS POWERSTOP

THREAD M36X1.5

► SERIES

PowerStop®



► Material	Stainless steel	► Organic oil (biodegradable)	HEES
► Permitted temperature range	-10 ... +70 [°C]	- H1-certified	Yes
► Angle of Impact max.	2 [°]	- PWIS-free	Yes
► Max. force at fixed stop	30 [kN]	► RoHS compliant - REACH compliant	Yes
► Lock nut tightening torque		► Max. absolute pressure	
- Standard energy	60 [Nm]	- Standard energy	1 [bar]
- High Energy	80 [Nm]	- High Energy	10 [bar]
- Adjustable Energy	80 [Nm]	- Adjustable Energy	10 [bar]

► TECHNICAL DATA

	Design	Series	Thread	Stroke variant	Stroke max. [mm]	Hardness degree	Impact velocity		Energy absorption max.			Protection	Reset			Head Integrated Fix stop	Version		
							min.	max.	Continuous operation		Emergency stop operation		Force min. [N]	Time max. [s]					
									per stroke [J]	per hour [J/h]					per stroke [J]				
STANDARD ENERGY	P	SE	36X15	N	30	H	0,1	1,2	185	140.000	185	D	15	35	0,4	D	x		
							M	0,8	2,2	185	140.000	185	-	15	35	0,4	E	-	
								S	1,8	3,5	185	140.000	185				-	S	x
								W	3,0	5,0	185	140.000	185				A	15	35
HIGH ENERGY	P	HE	36X15	N	30	H	0,1	1,2	400	120.000	800	D	40	65	0,4	D	x		
							M	0,8	2,2	360	120.000	650	-	40	65	0,4	E	-	
								S	1,8	3,5	320	120.000	500				-	S	x
								W	3,0	5,0	280	120.000	350				A	40	65
ADJUSTABLE ENERGY	P	AE	36X151	N	30	H	0,1	5,0	400	140.000	400	D	40	65	0,4	D	x		
							M	0,8	2,2	360	140.000	650	-	40	65	0,4	E	-	
								S	1,8	3,5	320	140.000	500				-	S	x
								W	3,0	5,0	280	140.000	350				A	40	65
HIGH ENERGY	P	HE	36X15	L	50	H	0,1	1,2	400	140.000	800	D	40	65	0,8	D	x		
							M	0,8	2,2	360	140.000	650	-	40	65	0,8	E	-	
								S	1,8	3,5	320	140.000	500				-	S	x
								W	3,0	5,0	280	140.000	350				A	40	65
ADJUSTABLE ENERGY	P	AE	36X15	L	50	H	0,1	5,0	400	140.000	400	D	40	65	0,8	D	x		
							M	0,8	2,2	360	140.000	650	-	40	65	0,8	E	-	
								S	1,8	3,5	320	140.000	500				-	S	x
								W	3,0	5,0	280	140.000	350				A	40	65

PROTECTION

no protection	Felt ring	Wiper (NBR)
D -A	F -A	A -A
in a clean environment	against dust, chips, ...	against liquid, oil, ...

TECHNICAL DRAWINGS

	Short piston rod no head	Long piston rod no head	with steel head	with plastic head
	N D -A	N E -A	N S -A	N K -A
STANDARD ENERGY	 M36x1.5, 155, 24, 46, 10, 4.5, 12, 30, 125, 730g	 165, 30, 10, 40, 125, 740g	 170, 30, 22, 31, 15, 125, 800g	 170, 30, 22, 31, 15, 125, 800g
HIGH ENERGY	 M36x1.5, 156, 24, 46, 10, 4.5, 12, 30, 126, 760g	 166, 30, 10, 40, 126, 770g	 171, 30, 22, 31, 15, 126, 830g	 171, 30, 22, 31, 15, 126, 830g
ADJUSTABLE ENERGY	 M36x1.5, 173, 24, 46, 10, 23.6, 3, M5, 4.5, 12, 30, 17, 126, 810g	 183, 30, 10, 40, 126, 820g	 188, 30, 22, 31, 15, 126, 880g	 188, 30, 22, 31, 15, 126, 880g

	Short piston rod no head	Long piston rod no head	with steel head	with plastic head
	L D -A	L E -A	L S -A	L K -A
HIGH ENERGY	 M36x1.5, 221, 24, 46, 10, 4.5, 12, 50, 171, 1030g	 231, 50, 10, 60, 171, 1040g	 236, 50, 22, 31, 15, 171, 1100g	 236, 50, 22, 31, 15, 171, 1100g
ADJUSTABLE ENERGY	 M36x1.5, 238, 24, 46, 10, 23.6, 3, M5, 4.5, 12, 50, 17, 171, 1070g	 248, 50, 10, 60, 171, 1080g	 253, 50, 22, 31, 15, 171, 1140g	 253, 50, 22, 31, 15, 171, 1140g

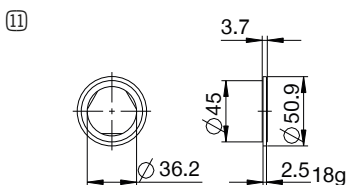
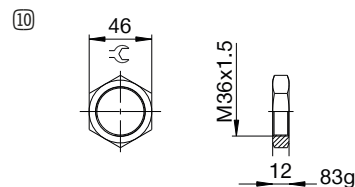
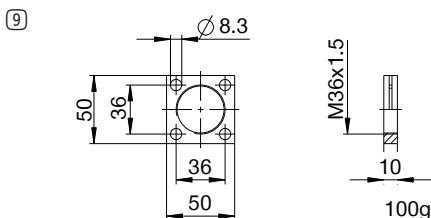
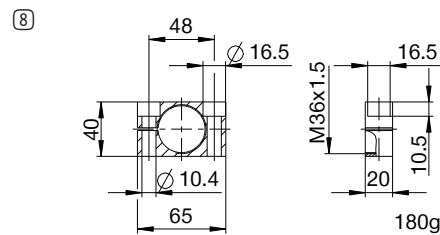
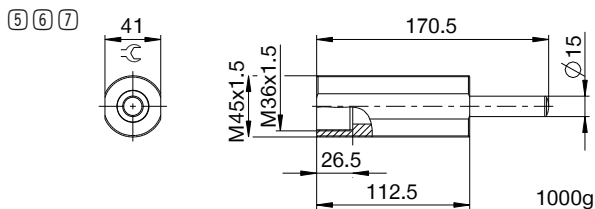
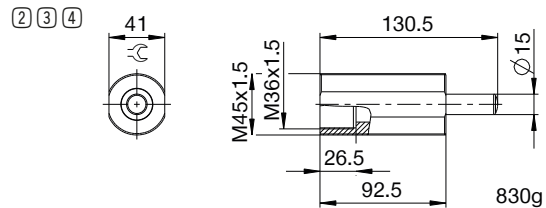
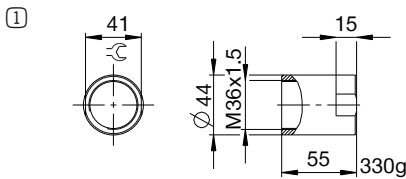


INDUSTRIAL SHOCK ABSORBERS POWERSTOP

THREAD M36X1.5

ACCESSORIES

Pos.	Order no.	Accessories	Remarks
①	PAH36X15-A	Stop sleeve	Including 1x PVM36X15-A. Industrial shock absorber with bellow excluded.
②	PBV36X15ND-A	Side load adapter standard stroke Protection: no protection	Impact angle max. 30°. Can only be used in combination with industrial shock absorber without protection and without the Short piston rod no head variant. Lock nut PVM45X15-A suitable for external thread of the side load adapter.
③	PBV36X15NF-A	Side load adapter standard stroke Protection: felt ring (felt)	Impact angle max. 30°. Can only be used in combination with industrial shock absorber without protection and without the Short piston rod no head variant. Lock nut PVM45X15-A suitable for external thread of the side load adapter.
④	PBV36X15NA-A	Side load adapter standard stroke Protection: wiper (NBR)	Impact angle max. 30°. Can only be used in combination with industrial shock absorber without protection and without the Short piston rod no head variant. Lock nut PVM45X15-A suitable for external thread of the side load adapter.
⑤	PBV36X15LD-A	Side load adapter long stroke Protection: no protection	Impact angle max. 30°. Can only be used in combination with industrial shock absorber without protection and without the Short piston rod no head variant. Lock nut PVM45X15-A suitable for external thread of the side load adapter.
⑥	PBV36X15LF-A	Side load adapter long stroke Protection: felt ring (felt)	Impact angle max. 30°. Can only be used in combination with industrial shock absorber without protection and without the Short piston rod no head variant. Lock nut PVM45X15-A suitable for external thread of the side load adapter.
⑦	PBV36X15LA-A	Side load adapter long stroke Protection: wiper (NBR)	Impact angle max. 30°. Can only be used in combination with industrial shock absorber without protection and without the Short piston rod no head variant. Lock nut PVM45X15-A suitable for external thread of the side load adapter.
⑧	PKS36X15-A	Clamping flange orthogonal screwed	Tightening torque of the screws max. 45 Nm.
⑨	PKP36X15-A	Clamping flange screwed in parallel	Tightening torque of the screws max. 22 Nm.
⑩	PVM36X15-A	Stainless steel locknut	Included with the industrial shock absorber.
⑪	PDD36X15-A	Pressure chamber seal	On request. Recommended fixing with PVM36x15-A. Seal must be in full contact on both sides.



▶ CLASSIFICATION

P **HE** **36X15** **L** **H** **A** **K** **-A**

Design

P Industrial shock absorbers PowerStop

Series

ME Mini Energy

SE Standard Energy

HE High Energy

AE Adjustable Energy

Thread

36 Thread nominal diameter

X

15 Thread pitch (factor 10)

Stroke variant

N Standard stroke

L Long stroke

Hardness degree

H Hard (0.1 - 1.2 m/s; Adjustable Energy: 0.1 - 5 m/s)

M Medium (0.8 - 2.2 m/s)

S Soft (1.8 - 3.5 m/s)

W Supersoft (3 - 5 m/s)

Protection

D no protection

F Felt ring

A Wiper (NBR)

B Bellow (TPE)

Head

D Short piston rod no head

E Long piston rod no head

S with steel head

K with plastic head

Version

-A Versioning from a to z