

INDUSTRIAL SHOCK ABSORBERS POWERSTOP

THREAD M22X1.5

SERIES

PowerStop®



▶ Material	Stainless steel	▶ Organic oil (biodegradable)	HEES
▶ Permitted temperature range	-10 ... +70 [°C]	- H1-certified	Yes
▶ Angle of Impact max.	2 [°]	- PWIS-free	Yes
▶ Max. force at fixed stop	10 [kN]	▶ RoHS compliant - REACH compliant	Yes
▶ Lock nut tightening torque		▶ Max. absolute pressure	
- Standard energy	20 [Nm]	- Standard energy	1 [bar]
- High Energy	40 [Nm]	- High Energy	10 [bar]
- Adjustable Energy	40 [Nm]	- Adjustable Energy	10 [bar]

TECHNICAL DATA

	Design	Series	Thread	Stroke variant	Stroke max. [mm]	Hardness degree	Impact velocity		Energy absorption max.			Protection	Reset			Head Integrated stop	Version		
							min.	max.	Continuous operation		Emergency stop operation		min.	max.	Time max.				
									per stroke	per hour								per stroke	
					[m/s]	[m/s]	[J]	[J/h]	[J]	[N]	[N]	[s]							
STANDARD ENERGY	P	SE	22X15	N	15	H	0,1	1,2	41	90.000	41	D	7	15	0,3	D	x		
							M	0,8	2,2	41	90.000	41	-	-	-	-	-	-	-
							S	1,8	3,5	41	90.000	41	F	7	15	0,3	S	x	
							W	3,0	5,0	41	90.000	41	A	7	15	0,3	K	x	
HIGH ENERGY	P	HE	22X15	N	15	H	0,1	1,2	80	90.000	150	D	16	26	0,3	D	x		
							M	0,8	2,2	75	90.000	125	-	-	-	-	-	-	
							S	1,8	3,5	70	90.000	100	F	16	26	0,3	S	x	
							W	3,0	5,0	65	90.000	75	A	16	26	0,3	K	x	
ADJUSTABLE ENERGY	P	AE	22X15	N	15	H	0,1	5,0	80	90.000	80	D	16	26	0,3	D	x		
							M	0,8	2,2	75	90.000	125	-	-	-	-	-	-	
							S	1,8	3,5	70	90.000	100	F	16	26	0,3	S	x	
							W	3,0	5,0	65	90.000	75	A	16	26	0,3	K	x	
HIGH ENERGY	P	HE	22X15	L	25	H	0,1	1,2	80	90.000	150	D	16	26	0,5	D	x		
							M	0,8	2,2	75	90.000	125	-	-	-	-	-	-	
							S	1,8	3,5	70	90.000	100	A	16	26	0,5	S	x	
							W	3,0	5,0	65	90.000	75	F	16	26	0,5	K	x	
ADJUSTABLE ENERGY	P	AE	22X15	L	25	H	0,1	5,0	80	90.000	80	D	16	26	0,5	D	x		
							M	0,8	2,2	75	90.000	125	-	-	-	-	-	-	
							S	1,8	3,5	70	90.000	100	F	16	26	0,5	S	x	
							W	3,0	5,0	65	90.000	75	A	16	26	0,5	K	x	

PROTECTION

no protection	Felt ring	Wiper (NBR)
D -A	F -A	A -A
in a clean environment	against dust, chips, ...	against liquid, oil, ...

TECHNICAL DRAWINGS

	Short piston rod no head	Long piston rod no head	with steel head	with plastic head
	N D -A	N E -A	N S -A	N K -A
STANDARD ENERGY				
HIGH ENERGY				
ADJUSTABLE ENERGY				

	Short piston rod no head	Long piston rod no head	with steel head	with plastic head
	L D -A	L E -A	L S -A	L K -A
HIGH ENERGY				
ADJUSTABLE ENERGY				

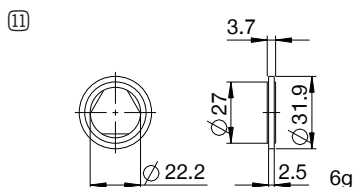
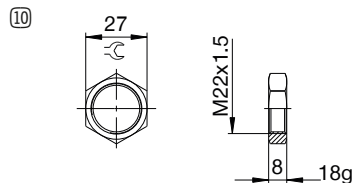
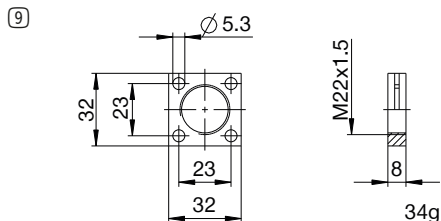
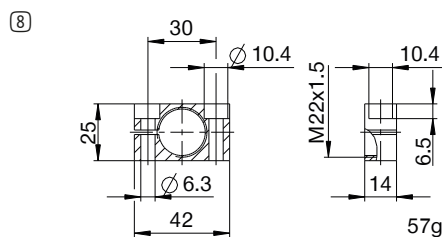
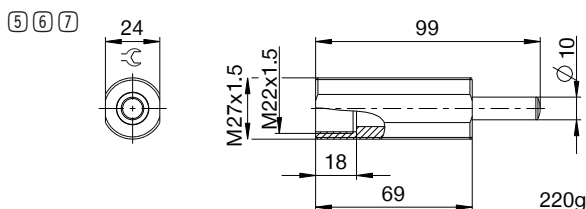
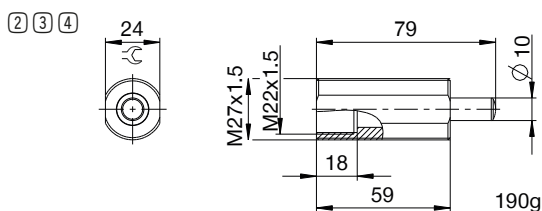
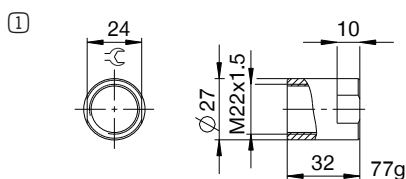


INDUSTRIAL SHOCK ABSORBERS POWERSTOP

THREAD M22X1.5

ACCESSORIES

Pos.	Order no.	Accessories	Remarks
①	PAH22X15-A	Stop sleeve	Including 1x PVM22X15-A. Industrial shock absorber with bellow excluded.
②	PBV22X15ND-A	Side load adapter standard stroke Protection: no protection	Impact angle max. 30°. Can only be used in combination with industrial shock absorber without protection and without the Short piston rod no head variant. Lock nut PVM27X15-A suitable for external thread of the side load adapter.
③	PBV22X15NF-A	Side load adapter standard stroke Protection: felt ring (felt)	Impact angle max. 30°. Can only be used in combination with industrial shock absorber without protection and without the Short piston rod no head variant. Lock nut PVM27X15-A suitable for external thread of the side load adapter.
④	PBV22X15NA-A	Side load adapter standard stroke Protection: wiper (NBR)	Impact angle max. 30°. Can only be used in combination with industrial shock absorber without protection and without the Short piston rod no head variant. Lock nut PVM27X15-A suitable for external thread of the side load adapter.
⑤	PBV22X15LD-A	Side load adapter long stroke Protection: no protection	Impact angle max. 30°. Can only be used in combination with industrial shock absorber without protection and without the Short piston rod no head variant. Lock nut PVM27X15-A suitable for external thread of the side load adapter.
⑥	PBV22X15LF-A	Side load adapter long stroke Protection: felt ring (felt)	Impact angle max. 30°. Can only be used in combination with industrial shock absorber without protection and without the Short piston rod no head variant. Lock nut PVM27X15-A suitable for external thread of the side load adapter.
⑦	PBV22X15LA-A	Side load adapter long stroke Protection: wiper (NBR)	Impact angle max. 30°. Can only be used in combination with industrial shock absorber without protection and without the Short piston rod no head variant. Lock nut PVM27X15-A suitable for external thread of the side load adapter.
⑧	PKS22X15-A	Clamping flange orthogonal screwed	Tightening torque of the screws max. 10 Nm.
⑨	PKP22X15-A	Clamping flange screwed in parallel	Tightening torque of the screws max. 5 Nm.
⑩	PVM22X15-A	Stainless steel locknut	Included with the industrial shock absorber.
⑪	PDD22X15-A	Pressure chamber seal	On request. Recommended fixing with PVM22x15-A. Seal must be in full contact on both sides.



▶ CLASSIFICATION

P HE 22X15 L H A K -A

Design

P Industrial shock absorbers PowerStop

Series

ME Mini Energy

SE Standard Energy

HE High Energy

AE Adjustable Energy

Thread

22 Thread nominal diameter

X

15 Thread pitch (factor 10)

Stroke variant

N Standard stroke

L Long stroke

Hardness degree

H Hard (0.1 - 1.2 m/s; Adjustable Energy: 0.1 - 5 m/s)

M Medium (0.8 - 2.2 m/s)

S Soft (1.8 - 3.5 m/s)

W Supersoft (3 - 5 m/s)

Protection

D no protection

F Felt ring

A Wiper (NBR)

B Bellow (TPE)

Head

D Short piston rod no head

E Long piston rod no head

S with steel head

K with plastic head

Version

-A Versioning from a to z