

INDUSTRIAL SHOCK ABSORBERS POWERSTOP THREAD M14X1.5

► SERIES

PowerStop®



► Material	Stainless steel	► Organic oil (biodegradable)	HEES
► Permitted temperature range	-10 ... +70 [°C]	- H1-certified	Yes
► Angle of Impact max.	2 [°]	- PWIS-free	Yes
► Max. force at fixed stop	3.5 [kN]	► RoHS compliant - REACH compliant	Yes
► Lock nut tightening torque		► Max. absolute pressure	
- Standard energy	15 [Nm]	- Standard energy	1 [bar]
- High Energy	20 [Nm]	- High Energy	10 [bar]
- Adjustable Energy	20 [Nm]	- Adjustable Energy	10 [bar]

► TECHNICAL DATA

	Design	Series	Thread	Stroke variant	Stroke max. [mm]	Hardness degree	Impact velocity		Energy absorption max.			Protection	Reset			Head Integrated stop	Version	
							min.	max.	Continuous operation		Emergency stop operation		Force min. [N]	Time max. [s]				
									per stroke [J]	per hour [J/h]					per stroke [J]			
STANDARD ENERGY	P	SE	14X15	N	12	H	0,1	1,2	20	50.000	20	D	3	6	0,3	D	x	
							M	0,8	2,2	20	50.000	20	F	3	6	0,3	E	-
							S	1,8	3,5	20	50.000	20	A	3	6	0,3	S	x
							W	3,0	5,0	20	50.000	20	B	3	15	0,3	K	x
HIGH ENERGY	P	HE	14X15	N	12	H	0,1	1,2	34	50.000	42	D	7	11	0,3	D	x	
							M	0,8	2,2	32	50.000	38	F	7	11	0,3	E	-
							S	1,8	3,5	30	50.000	34	A	7	11	0,3	S	x
							W	3,0	5,0	28	50.000	30	B	7	20	0,3	K	x
ADJUSTABLE ENERGY	P	AE	14X15	N	12	H	0,1	5,0	34	50.000	34	D	7	11	0,3	D	x	
							M	0,8	5,0	32	50.000	34	F	7	11	0,3	E	-
							S	1,8	5,0	30	50.000	34	A	7	11	0,3	S	x
							W	3,0	5,0	28	50.000	30	B	7	20	0,3	K	x
HIGH ENERGY	P	HE	14X15	L	20	H	0,1	1,2	34	50.000	42	D	7	11	0,4	D	x	
							M	0,8	2,2	32	50.000	38	F	7	11	0,4	E	-
							S	1,8	3,5	30	50.000	34	A	7	11	0,4	S	x
							W	3,0	5,0	28	50.000	30	B	7	11	0,4	K	x
ADJUSTABLE ENERGY	P	AE	14X15	L	20	H	0,1	5,0	34	50.000	34	D	7	11	0,4	D	x	
							M	0,8	5,0	32	50.000	34	F	7	11	0,4	E	-
							S	1,8	5,0	30	50.000	34	A	7	11	0,4	S	x
							W	3,0	5,0	28	50.000	30	B	7	11	0,4	K	x

PROTECTION

no protection D -A	Felt ring F -A	Wiper (NBR) A -A	Bellow (TPE) B -A
in a clean environment	against dust, chips, ...	against liquid, oil, ...	

TECHNICAL DRAWINGS

	Short piston rod no head N D -A	Long piston rod no head N E -A	with steel head N S -A	with plastic head N K -A	with bellow and steel head N B S -A	with bellow and plastic head N B K -A
STANDARD ENERGY						
HIGH ENERGY						
ADJUSTABLE ENERGY						

	Short piston rod no head L D -A	Long piston rod no head L E -A	with steel head L S -A	with plastic head L K -A
HIGH ENERGY				
ADJUSTABLE ENERGY				

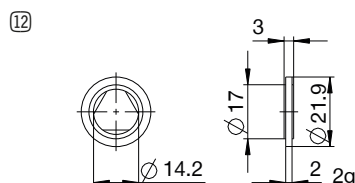
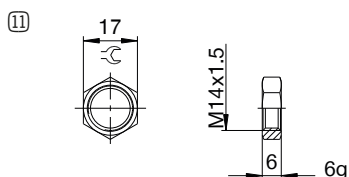
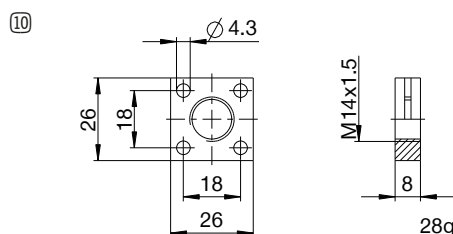
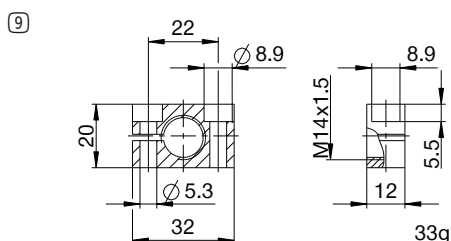
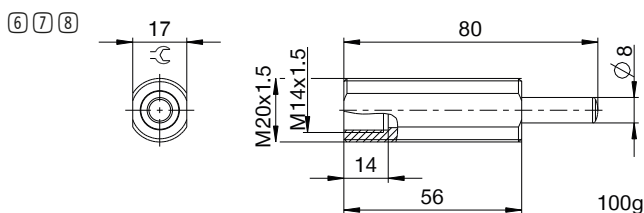
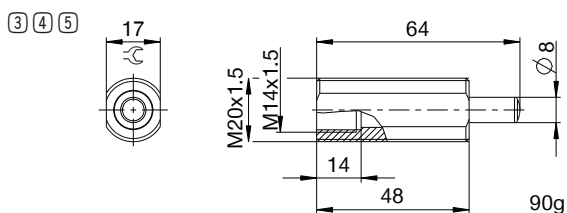
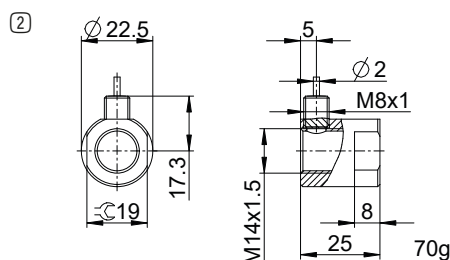
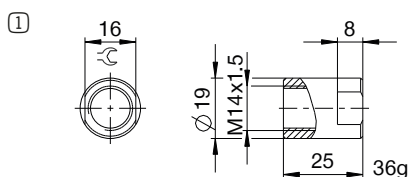


INDUSTRIAL SHOCK ABSORBERS POWERSTOP

THREAD M14X1.5

▶ ACCESSORIES

Pos.	Order no.	Accessories	Remarks
①	PAH14X15-A	Stop sleeve	Including 1x PVM14X15-A. Industrial shock absorber with bellow excluded.
②	PSH14X15-B	Sensor stop sleeve	Including 1x PVM14X15-A. Sensing only possible via industrial shock absorbers with steel or plastic head. Industrial shock absorber with bellow excluded. Inductive sensor, PNP (NC), 2 m PUR cable, IP67 degree of protection. See separate data sheet for additional information.
③	PBV14X15ND-A	Side load adapter standard stroke Protection: no protection	Impact angle max. 30°. Can only be used in combination with industrial shock absorber without protection and without the Short piston rod no head variant. Lock nut PVM20X15-A suitable for external thread of the side load adapter.
④	PBV14X15NF-A	Side load adapter standard stroke Protection: felt ring (felt)	Impact angle max. 30°. Can only be used in combination with industrial shock absorber without protection and without the Short piston rod no head variant. Lock nut PVM20X15-A suitable for external thread of the side load adapter.
⑤	PBV14X15NA-A	Side load adapter standard stroke Protection: wiper (NBR)	Impact angle max. 30°. Can only be used in combination with industrial shock absorber without protection and without the Short piston rod no head variant. Lock nut PVM20X15-A suitable for external thread of the side load adapter.
⑥	PBV14X15LD-A	Side load adapter long stroke Protection: no protection	Impact angle max. 30°. Can only be used in combination with industrial shock absorber without protection and without the Short piston rod no head variant. Lock nut PVM20X15-A suitable for external thread of the side load adapter.
⑦	PBV14X15LF-A	Side load adapter long stroke Protection: felt ring (felt)	Impact angle max. 30°. Can only be used in combination with industrial shock absorber without protection and without the Short piston rod no head variant. Lock nut PVM20X15-A suitable for external thread of the side load adapter.
⑧	PBV14X15LA-A	Side load adapter long stroke Protection: wiper (NBR)	Impact angle max. 30°. Can only be used in combination with industrial shock absorber without protection and without the Short piston rod no head variant. Lock nut PVM20X15-A suitable for external thread of the side load adapter.
⑨	PKS14X15-A	Clamping flange orthogonal screwed	Tightening torque of the screws max. 5 Nm.
⑩	PKP14X15-A	Clamping flange screwed in parallel	Tightening torque of the screws max. 3 Nm.
⑪	PVM14X15-A	Stainless steel locknut	Included with the industrial shock absorber.
⑫	PDD14X15-A	Pressure chamber seal	Recommended fixation with PVM14X15-A. Seal must be in full contact on both sides.



▶ CLASSIFICATION

P **HE** **14X15** **L** **H** **A** **K** **-A**

Design

P Industrial shock absorbers PowerStop

Series

ME Mini Energy

SE Standard Energy

HE High Energy

AE Adjustable Energy

Thread

14 Thread nominal diameter

X

15 Thread pitch (factor 10)

Stroke variant

N Standard stroke

L Long stroke

Hardness degree

H Hard (0.1 - 1.2 m/s; Adjustable Energy: 0.1 - 5 m/s)

M Medium (0.8 - 2.2 m/s)

S Soft (1.8 - 3.5 m/s)

W Supersoft (3 - 5 m/s)

Protection

D no protection

F Felt ring

A Wiper (NBR)

B Bellow (TPE)

Head

D Short piston rod no head

E Long piston rod no head

S with steel head

K with plastic head

Version

-A Versioning from a to z