

INDUSTRIAL SHOCK ABSORBERS POWERSTOP

THREAD M5X0.5

► SERIES

PowerStop®

MINI ENERGY



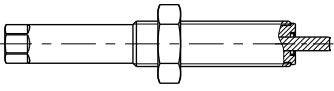
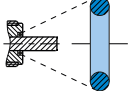
The slender

► Material	Stainless steel	► Organic oil (biodegradable)	HEES
► Permitted temperature range	-10 ... +70 [°C]	- H1-certified	Yes
► Angle of Impact max.	2 [°]	- PWIS-free	Yes
► Max. force at fixed stop	0.2 [kN]	► RoHS compliant - REACH compliant	Yes
► Lock nut tightening torque		► Max. absolute pressure	
- Mini Energy	1 [Nm]	- Mini Energy	10 [bar]

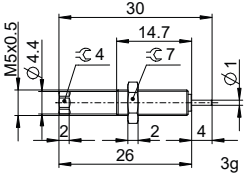
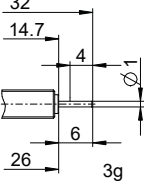
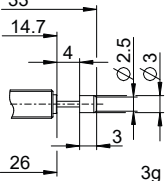
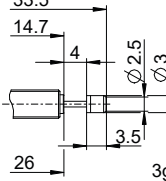
► TECHNICAL DATA

Design	Series	Thread	Stroke variant	Stroke max. [mm]	Hardness degree	Impact velocity		Energy absorption max.			Protection	Reset			Head	Integrated Fix stop	Version	
						min.	max.	Continuous operation per stroke [J]	Emergency stop operation per hour [J/h]	per stroke [J]		Force		Time [s]				
												min.	max.					min.
MINI ENERGY	P	ME	05X05	N	4	H	0,1	1,2	0,8	2.100	0,8	D	1	2	0,15	D	x	-B
					-							-				E	-	
					M	0,8	2,2	0,8	2.100	0,8	A	1	2	0,15	A	x		
																S	x	
																K	x	

► PROTECTION

no protection	Wiper (NBR)
D -B	A -B
	
in a clean environment	against liquid, oil, ...

► TECHNICAL DRAWINGS

	Short piston rod no head	Long piston rod no head	with steel head	with plastic head
	N D -B	N E -B	N S -B	N K -B
MINI ENERGY				



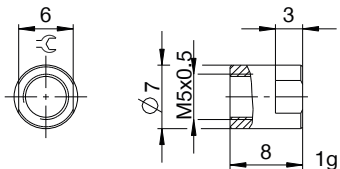
INDUSTRIAL SHOCK ABSORBERS POWERSTOP

THREAD M5X0.5

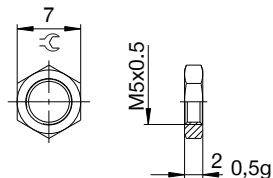
▶ ACCESSORIES

Pos.	Order no.	Accessories	Remarks
①	PAH05X05-A	Stop sleeve	Including 1x PVM05X05-A. Industrial shock absorber with bellow excluded.
②	PVM05X05-A	Stainless steel locknut	Included with the industrial shock absorber.
③	PDD05X05-A	Pressure chamber seal	Recommended fixation with PVM05X05-A. Seal must be in full contact on both sides.

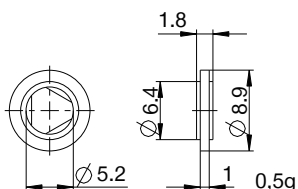
①



②



③



▶ CLASSIFICATION

P **ME** **05X05** **N** **H** **A** **D** **-B**

Design

P Industrial shock absorbers PowerStop

Series

ME Mini Energy

SE Standard Energy

HE High Energy

AE Adjustable Energy

Thread

05 Thread nominal diameter

X

05 Thread pitch (factor 10)

Stroke variant

N Standard stroke

L Long stroke

Hardness degree

H Hard (0.1 - 1.2 m/s; Adjustable Energy: 0.1 - 5 m/s)

M Medium (0.8 - 2.2 m/s)

S Soft (1.8 - 3.5 m/s)

W Supersoft (3 - 5 m/s)

Protection

D no protection

F Felt ring

A Wiper (NBR)

B Bellow (TPE)

Head

D Short piston rod no head

E Long piston rod no head

S with steel head

K with plastic head

Version

-A Versioning from a to z