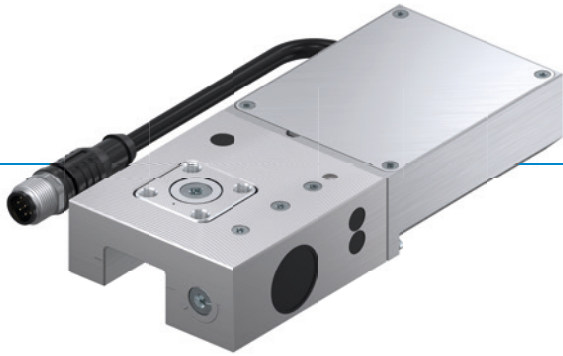


# CLAMPING ELEMENTS | ELECTRIC SERIES LKE

## ▶ PRODUCT ADVANTAGES



- ▶ **Energy-efficient (bistable)**  
Opens and closes using 24 V DC voltage
- ▶ **Integrated electronics**  
Digital control and status signals
- ▶ **Flexible cable outlet**  
For maximum space utilization

## ▶ THE BEST PRODUCT FOR YOUR APPLICATION

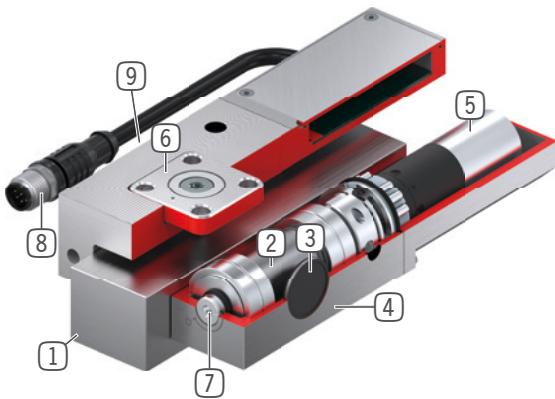
### APPLICATION SCENARIOS

- ▶ **Axes with electric positioning**
- ▶ **Table traverses in medical applications**
- ▶ **Electric clamping of machine tables**

### FURTHER INFORMATION

- ▶ **Spacer plate**  
In addition, a spacer plate might have to be ordered as height compensation, depending on the height of the rail carriage (dimension D).

## ► BENEFITS IN DETAIL



- ① **Profile rail guide**  
- Available for all common profile rail guides
- ② **Eccentric gear**  
- Power transmission between motor and clamping jaw
- ③ **Clamping jaw**  
- Pressed at the free surfaces of the profile rail guide
- ④ **Housing**
- ⑤ **electric drive**  
- For generating clamping force
- ⑥ **Sliding block**  
- For floating bearings
- ⑦ **Emergency actuation**  
- Manual opening possible in case of power supply failure
- ⑧ **Electrical connecting cable**  
- Control and power supply
- ⑨ **Adjusting screw**  
- Correction of the rail tolerance

## ► INFORMATION ON THE SERIES

Series	► Technical data
	<b>LKE</b>
Rail size	15-35 mm
Holding force	600-1800 N
Spring storage	inexistent
B10d value	up to 500 000
Dynamic braking cycles	not suitable
Protection to IEC 60529	IP64
Supply Voltage	24 [V DC]
Operation	electric
Operating temperature	+5 ... +50 [°C]