

# UCHWYTY ZACISKKOWE

## SERIA KB

### ► SPECYFIKACJE PRODUKTOWE



- Do mocowania czujników indukcyjnych
- Dostępne od 3 mm

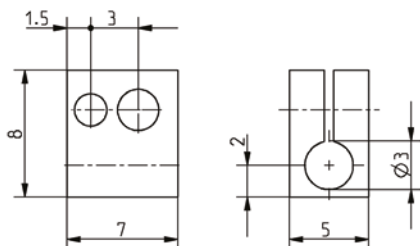
### ► Dane techniczne

#### Nr katalogowy

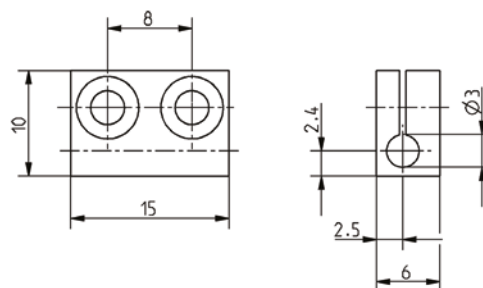
Pasuje do Ø czujnika. [mm]

	KB3	KB3M	KB4	KB5	KB6.5	KB8	KB12
	3	3	4	5	6.5	8	12

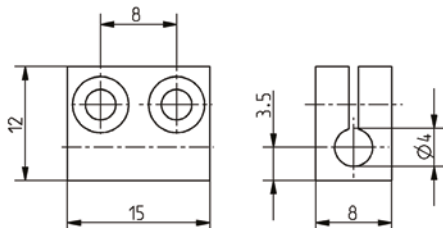
KB3M



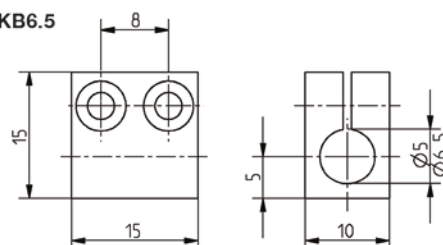
KB3



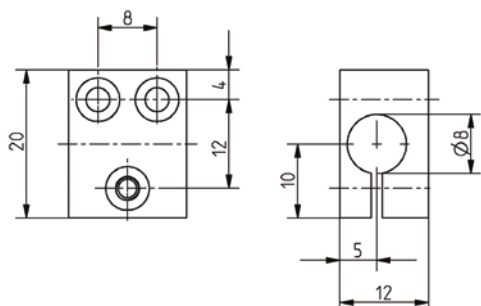
KB4



KB5 / KB6.5



KB8



KB12

