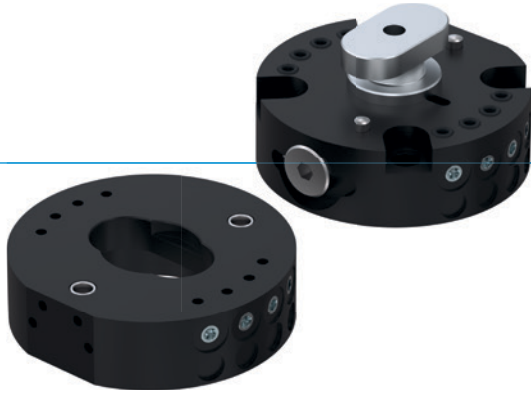


# TOOL CHANGERS

## SERIES HWR2000

### ▶ PRODUCT ADVANTAGES



#### ▶ **Change in seconds**

Reduce your start up costs and minimise downtimes by changing your tool in seconds

#### ▶ **Integrated air transfer system**

For supplying pneumatic actuators. Additional media can be transmitted using optional energy elements.

#### ▶ **Includes loss protection**

Undesired falling of work pieces is eliminated - this means the highest safety for man and machine

### ▶ THE BEST PRODUCT FOR YOUR APPLICATION



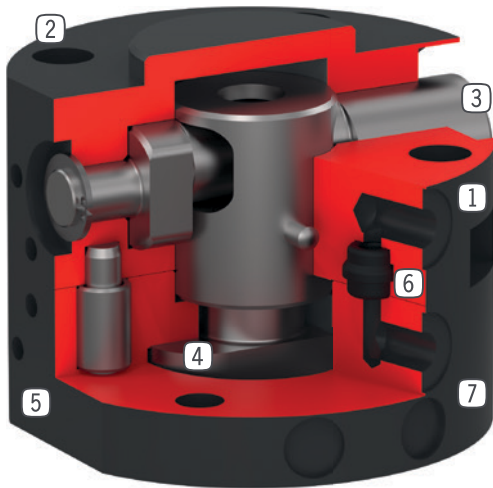
#### ▶ **Our products welcome the challenge!**

Extreme conditions, all over the world—our tried and tested components and systems give you endless possibilities.

Find the best product for your specific use:

[www.zimmer-group.com](http://www.zimmer-group.com)

## ► BENEFITS IN DETAIL



- ① **Fix part**  
- For robot side assembly
- ② **Robot flange**  
- partial mounting circle in accordance with EN ISO 9409-1
- ③ **Eccentric locking bolt**  
- with spring supported snap in function
- ④ **Locking bolt**  
- adapted to the clamping sleeve
- ⑤ **Mounting for energy element**
- ⑥ **Integrated air feed-through**  
- Air / vaccum transfer  
- hoseless control possible
- ⑦ **Loose part**  
- for tool side assembly

## ► TECHNICAL DATA

Installation size	Connecting flange according EN ISO 9409-1	Pneumatic energy transfer	Electrical energy transfer
		[Quantity]	
HWR2031	TK 31.5	4	optional
HWR2040	TK 40	4	optional
HWR2050	TK 50	8	optional

## ► FURTHER INFORMATION IS AVAILABLE ONLINE

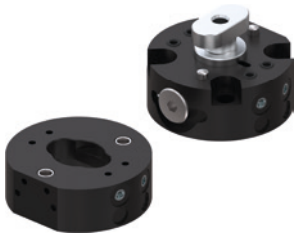


All information just a click away at: [www.zimmer-group.com](http://www.zimmer-group.com). Find data, illustrations, 3D models and operating instructions for your installation size using the order number for your desired product. Quick, clear and always up-to-date.

# TOOL CHANGERS

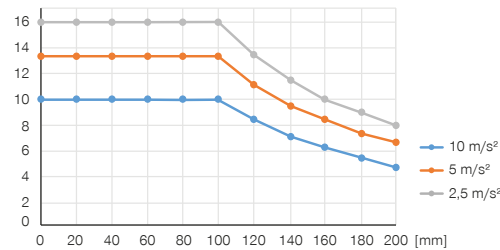
## INSTALLATION SIZE HWR2040

### ▶ PRODUCT SPECIFICATIONS



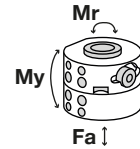
#### ▶ Variable installation position

Shows the maximum handling weight depending on acceleration and lever arm. Does not replace the technical design.  
[kg]



#### ▶ Forces and moments

Shows static forces and moments which may impact on the tool changer when locked.



Mr [Nm]	55
My [Nm]	50
Fa [N]	1200

### ▶ RECOMMENDED ACCESSORIES



#### ENERGY SUPPLY



**GVM5**  
Straight Fittings - Quick Connect Style

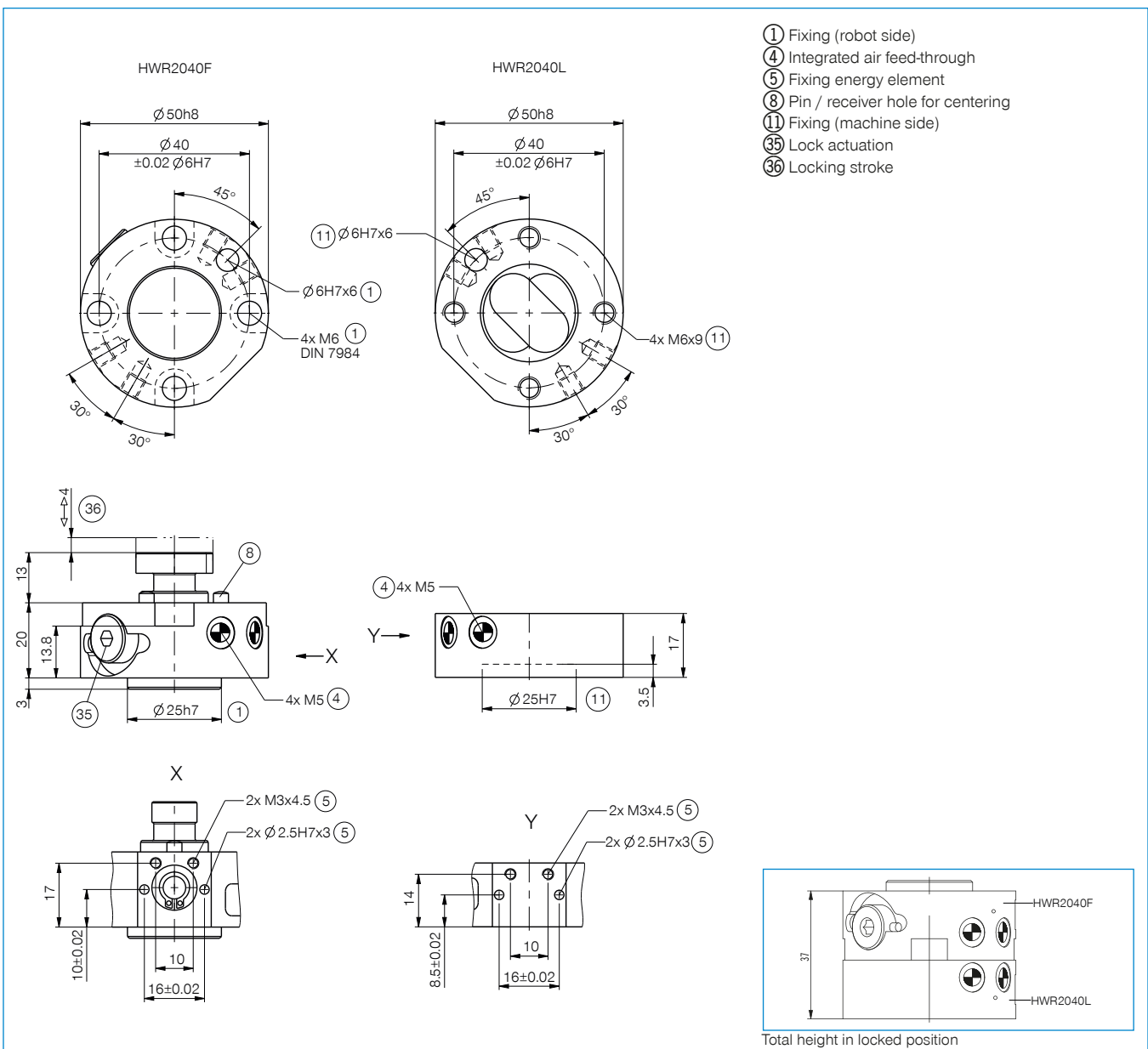


#### CONNECTIONS / OTHER



Energy elements and accessories for tool changer

Order no.	▶ Technical data	
	HWR2040F	HWR2040L
Connecting flange according EN ISO 9409-1	TK 40	TK 40
Pneumatic energy transfer [Quantity]	4	4
Flow per connector [l/min]	150	150
Electrical energy transfer	optional	optional
Self locking mechanism when locking	mechanical	mechanical
Locking stroke [mm]	4	
Repetition accuracy in Z [mm]	0.01	0.01
Repetition accuracy in X, Y [mm]	0.02	0.02
Nominal operating pressure [bar]	6	6
Operating temperature [°C]	5 ... +80	5 ... +80
Moment of inertia [kgcm <sup>2</sup> ]	0.33	0.26
Weight [kg]	0.14	0.071



# ENERGY ELEMENTS FOR TOOL CHANGER

## SIZES HWR2031 / HWR2040 / HWR2050

### ▶ CONNECTION DIAGRAM

