

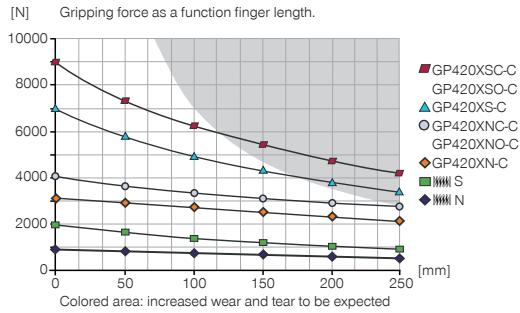
2-JAW PARALLEL GRIPPERS

INSTALLATION SIZE GP420X

▶ PRODUCT SPECIFICATIONS

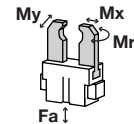


▶ Gripping force diagram



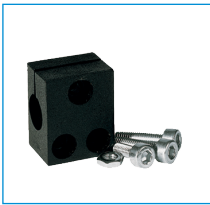
▶ Forces and moments

Displays static forces and moments that can also have an effect, besides the gripping force.



Mr	170
Mx	210
My	220
Fa	7000

▶ INCLUDED IN DELIVERY



Mounting block

KB8K



Centering Disc

DST42000

▶ RECOMMENDED ACCESSORIES



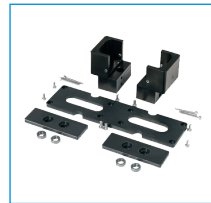
Universal Jaw Aluminium

UB420



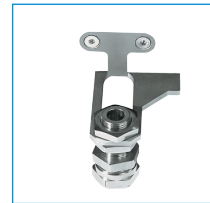
Universal Jaw Steel

UB420ST



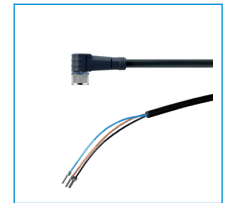
Dust protection

PR420-B



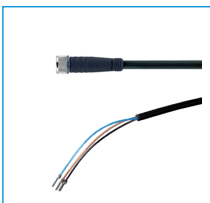
Alternate proximity bracket

KHA420-B-8



Plug-in connector Angled Cable 5m - Socket M8 (female)

KAW500



Plug-in connector Straight Cable 5m - Socket M8 (female)

KAG500



Magnetic field sensor Angled Cable 5 m

MFS103KHC



Magnetic field sensor Straight Cable 0,3 m - Connector M8

MFS103SKHC



Magnetic field sensor Straight Cable 5 m

MFS204KHC



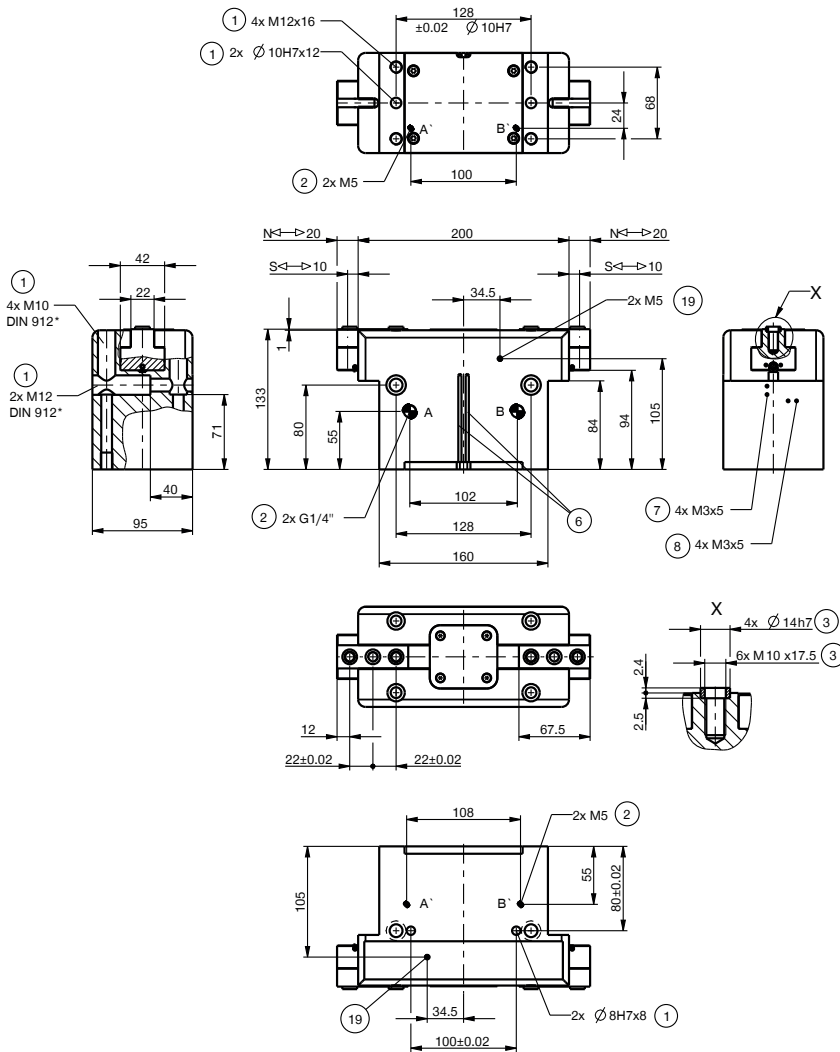
Magnetic field sensor Straight Cable 0,3 m - Connector M8

MFS204SKHC

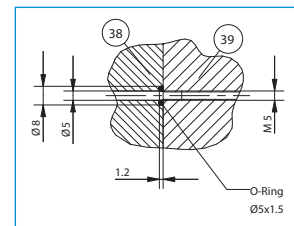
Order no.	▶ Technical Data*					
	GP420XN-C	GP420XNC-C	GP420XNO-C	GP420XS-C	GP420XSC-C	GP420XSO-C
Stroke per jaw [mm]	20	20	20	10	10	10
Gripping force in closing [N]	3175	4060	-	7080	9060	-
Gripping force in opening [N]	3330	-	4215	7430	-	9400
Gripping force secured by spring min. [N]	-	900	900	-	1975	1975
Closing time [s]	0.35	0.3	0.4	0.35	0.3	0.4
Opening time [s]	0.35	0.4	0.3	0.35	0.4	0.3
Repetition accuracy +/- [mm]	0.01	0.01	0.01	0.01	0.01	0.01
Operating pressure min. [bar]	3	4	4	3	4	4
Operating pressure max. [bar]	8	8	8	8	8	8
Operating temperature min. [°C]	5	5	5	5	5	5
Operating temperature max. [°C]	80	80	80	80	80	80
Air volume per cycle [cm ³]	320	590	590	320	590	590
Weight [kg]	5.5	6.7	6.7	5.5	6.7	6.7

*All data measured at 6 bar

NC / NO / SC / SO



- ① Gripper attachment
- ② Energy supply
- ③ Fixing for gripper finger
- ⑥ Integrated slot for magnetic field sensor
- ⑦ Fixing for mounting block
- ⑧ Fixing clamping bracket (KHA)
- ⑰ Air purge connection option
- ⑳ Adapter
- ㉑ Gripper
- A Air connection (close)
- B Air connection (open)
- A Air connection, alternative (close)
- B Air connection, alternative (open)



Hoseless air feed-through

N / S

