

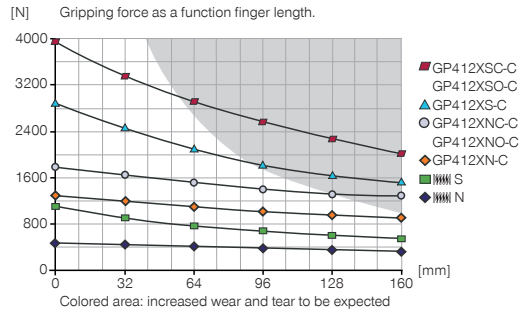
# 2-JAW PARALLEL GRIPPERS

## INSTALLATION SIZE GP412X

### ▶ PRODUCT SPECIFICATIONS

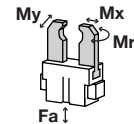


#### ▶ Gripping force diagram



#### ▶ Forces and moments

Displays static forces and moments that can also have an effect, besides the gripping force.



Mr	100
Mx	145
My	120
Fa	3200

### ▶ INCLUDED IN DELIVERY



Mounting block

KB8K



Centering Disc

DST41000

### ▶ RECOMMENDED ACCESSORIES



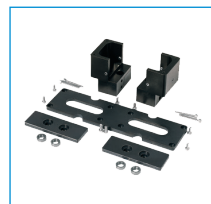
Universal Jaw Aluminium

UB412



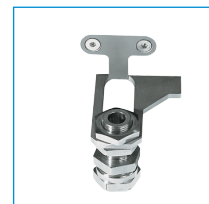
Universal Jaw Steel

UB412ST



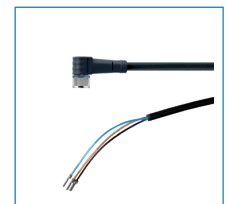
Dust protection

PR412-B



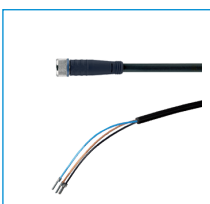
Alternate proximity bracket

KHA412-B-8



Plug-in connector Angled Cable 5m - Socket M8 (female)

KAW500



Plug-in connector Straight Cable 5m - Socket M8 (female)

KAG500



Magnetic field sensor Angled Cable 5 m

MFS103KHC



Magnetic field sensor Angled Cable 0,3 m - Connector M8

MFS103SKHC



Magnetic field sensor Straight Cable 5 m

MFS204KHC

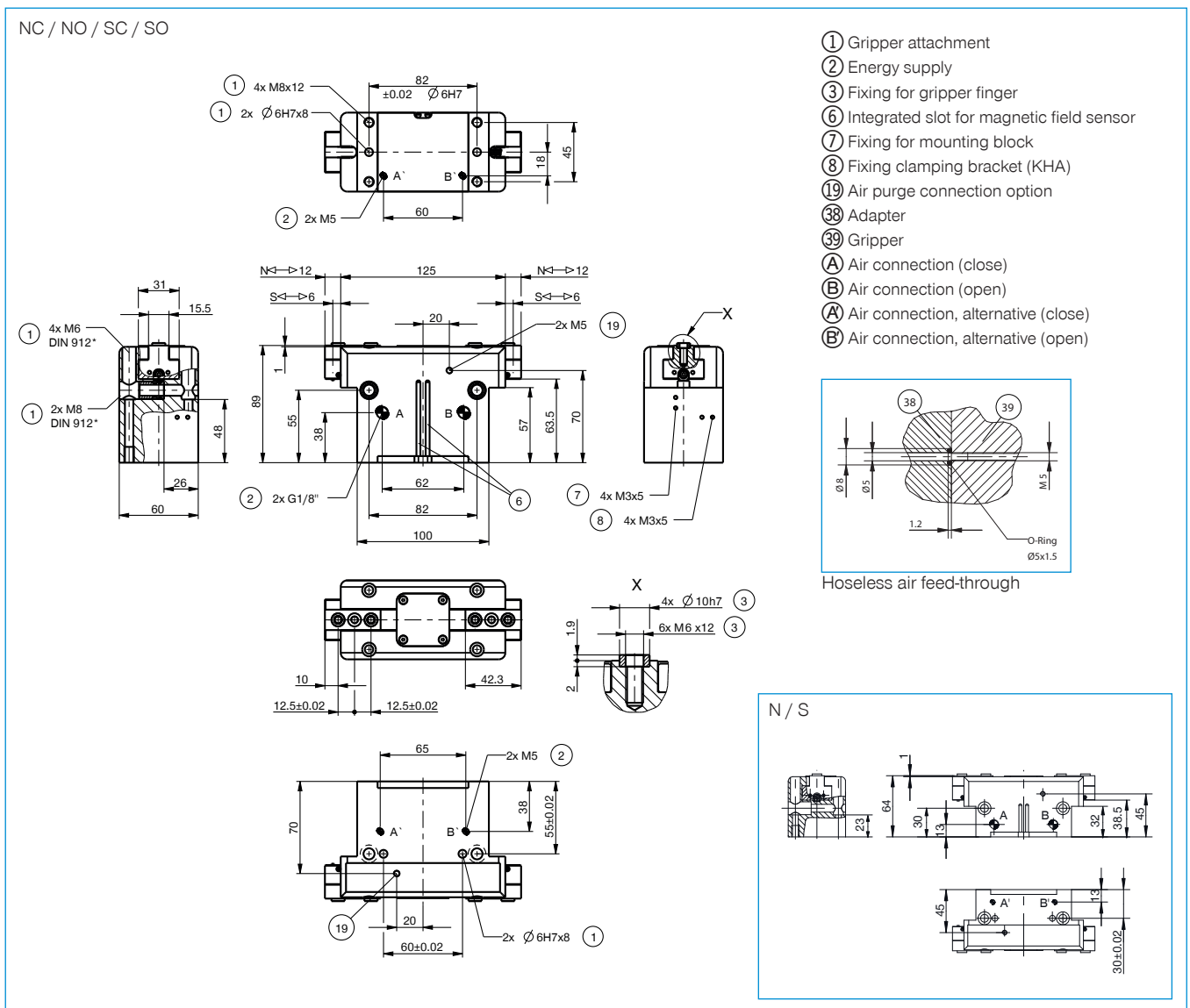


Magnetic field sensor Straight Cable 0,3 m - Connector M8

MFS204SKHC

Order no.	► Technical Data*					
	GP412XN-C	GP412XNC-C	GP412XNO-C	GP412XS-C	GP412XSC-C	GP412XSO-C
Stroke per jaw [mm]	12	12	12	6	6	6
Gripping force in closing [N]	1290	1780	-	2890	3960	-
Gripping force in opening [N]	1370	-	1850	3050	-	4130
Gripping force secured by spring min. [N]	-	490	490	-	1080	1080
Closing time [s]	0.1	0.08	0.12	0.1	0.08	0.12
Opening time [s]	0.1	0.12	0.08	0.1	0.12	0.08
Repetition accuracy +/- [mm]	0.02	0.02	0.05	0.05	0.05	0.05
Operating pressure min. [bar]	3	4	4	3	4	4
Operating pressure max. [bar]	8	8	8	8	8	8
Operating temperature min. [°C]	5	5	5	5	5	5
Operating temperature max. [°C]	80	80	80	80	80	80
Air volume per cycle [cm <sup>3</sup> ]	80	148	148	80	148	148
Weight [kg]	1.5	1.78	1.78	1.5	1.78	1.78

\*All data measured at 6 bar



- ① Gripper attachment
- ② Energy supply
- ③ Fixing for gripper finger
- ⑥ Integrated slot for magnetic field sensor
- ⑦ Fixing for mounting block
- ⑧ Fixing clamping bracket (KHA)
- ①9 Air purge connection option
- ③8 Adapter
- ③9 Gripper
- Ⓐ Air connection (close)
- Ⓑ Air connection (open)
- Ⓐ Air connection, alternative (close)
- Ⓑ Air connection, alternative (open)