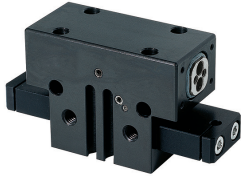


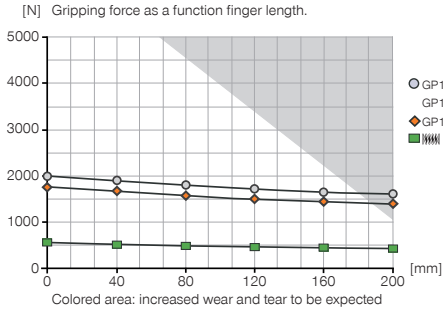
# 2-JAW PARALLEL GRIPPERS

## INSTALLATION SIZE GP1816

### ▶ PRODUCT SPECIFICATIONS

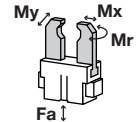


#### ▶ Gripping force diagram



#### ▶ Forces and moments

Displays static forces and moments that can also have an effect, besides the gripping force.



Mr	65
Mx	120
My	80
Fa	3000

### ▶ INCLUDED IN DELIVERY



Centering Disc

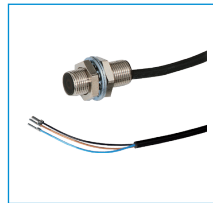
DST41600

### ▶ RECOMMENDED ACCESSORIES



Alternate proximity bracket

KHA1816-B-8



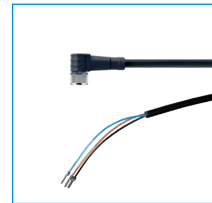
Inductive proximity switch - Cable 5 m

NJ8-E2



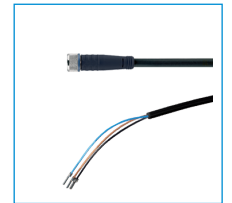
Inductive proximity switch - Connector M8

NJ8-E2S



Plug-in connector Angled Cable 5m - Socket M8 (female)

KAW500



Plug-in connector Straight Cable 5m - Socket M8 (female)

KAG500



Magnetic field sensor Angled Cable 5 m

MFS103KHC



Magnetic field sensor Angled Cable 0,3 m - Connector M8

MFS103SKHC



Magnetic field sensor Straight Cable 5 m

MFS204KHC



Magnetic field sensor Straight Cable 0,3 m - Connector M8

MFS204SKHC



Straight Fittings - Quick Connect Style

GV1-8X6

Order no.	Technical Data*		
	GP1816N-B	GP1816NC-B	GP1816NO-B
Stroke per jaw [mm]	16	16	16
Gripping force in closing [N]**	1915	2050	-
Gripping force in opening [N]**	1915	-	2050
Gripping force secured by spring min. [N]	-	650	650
Closing time [s]	0.2	0.3	0.3
Opening time [s]	0.2	0.3	0.3
Repetition accuracy +/- [mm]	0.01	0.01	0.01
Operating pressure min. [bar]	3	5	5
Operating pressure max. [bar]	8	8	8
Operating temperature min. [°C]	5	5	5
Operating temperature max. [°C]	80	80	80
Air volume per cycle [cm³]	153	183	183
Weight [kg]	3.65	4.25	4.25

\*All data measured at 6 bar

\*\*

