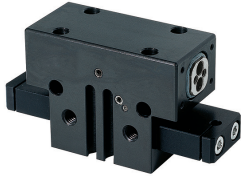


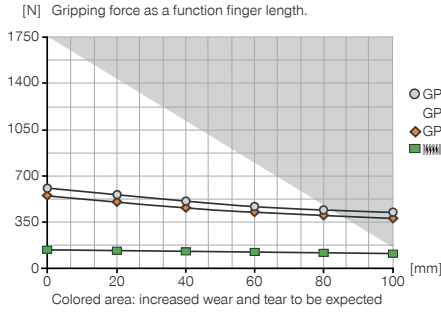
# 2-JAW PARALLEL GRIPPERS

## INSTALLATION SIZE GP1808

### ▶ PRODUCT SPECIFICATIONS

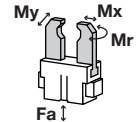


#### ▶ Gripping force diagram



#### ▶ Forces and moments

Displays static forces and moments that can also have an effect, besides the gripping force.



Mr	25
Mx	40
My	30
Fa	750

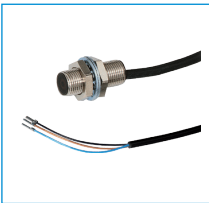
### ▶ INCLUDED IN DELIVERY



Centering Disc

**BDST40800**

### ▶ RECOMMENDED ACCESSORIES



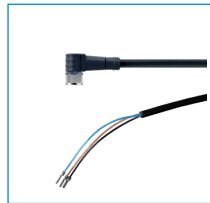
Inductive proximity switch  
- Cable 5 m

**NJ8-E2**



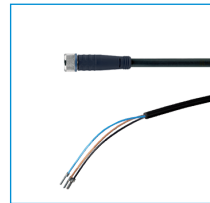
Inductive proximity switch  
- Connector M8

**NJ8-E2S**



Plug-in connector Angled  
Cable 5m - Socket M8  
(female)

**KAW500**



Plug-in connector Straight  
Cable 5m - Socket M8  
(female)

**KAG500**



Magnetic field sensor  
Angled Cable 5 m

**MFS103KHC**



Magnetic field sensor Angled  
Cable 0,3 m - Connector M8

**MFS103SKHC**



Magnetic field sensor  
Straight Cable 5 m

**MFS204KHC**



Magnetic field sensor Straight  
Cable 0,3 m - Connector M8

**MFS204SKHC**



Straight Fittings - Quick  
Connect Style

**GV1-8X6**



Mounting block

**KB1800-03**

Order no.	▶ Technical Data*		
	GP1808N-B	GP1808NC-B	GP1808NO-B
Stroke per jaw [mm]	8	8	8
Gripping force in closing [N]**	550	560	-
Gripping force in opening [N]**	550	-	560
Gripping force secured by spring min. [N]	-	160	160
Closing time [s]	0.04	0.06	0.06
Opening time [s]	0.04	0.06	0.06
Repetition accuracy +/- [mm]	0.01	0.01	0.01
Operating pressure min. [bar]	3	5	5
Operating pressure max. [bar]	8	8	8
Operating temperature min. [°C]	5	5	5
Operating temperature max. [°C]	80	80	80
Air volume per cycle [cm³]	24	27	27
Weight [kg]	0.64	0.72	0.72

\*All data measured at 6 bar

\*\*

