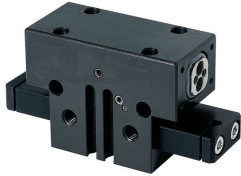


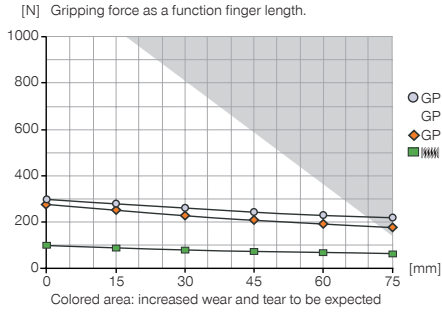
2-JAW PARALLEL GRIPPERS

INSTALLATION SIZE GP1806

▶ PRODUCT SPECIFICATIONS

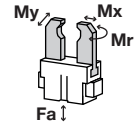


▶ Gripping force diagram



▶ Forces and moments

Displays static forces and moments that can also have an effect, besides the gripping force.



Mr	15
Mx	30
My	25
Fa	500

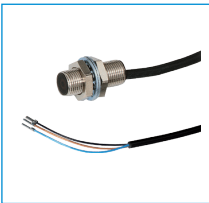
▶ INCLUDED IN DELIVERY



Centering Disc

DST40600

▶ RECOMMENDED ACCESSORIES



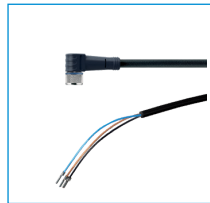
Inductive proximity switch
- Cable 5 m

NJ8-E2



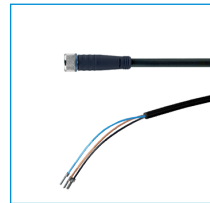
Inductive proximity switch
- Connector M8

NJ8-E2S



Plug-in connector Angled
Cable 5m - Socket M8
(female)

KAW500



Plug-in connector Straight
Cable 5m - Socket M8
(female)

KAG500



Magnetic field sensor
Angled Cable 5 m

MFS103KHC



Magnetic field sensor Angled
Cable 0,3 m - Connector M8

MFS103SKHC



Magnetic field sensor
Straight Cable 5 m

MFS204KHC



Magnetic field sensor Straight
Cable 0,3 m - Connector M8

MFS204SKHC



Straight Fittings - Quick
Connect Style

GVM5



Mounting block

KB1800-03

