

CLAMPING AND BRAKING ELEMENTS

INDIVIDUALIZATION STAINLESS-STEEL DESIGN

► SPECIFICATIONS COMPARED TO STANDARD PRODUCT



- **Stainless steel model**
- **Use of Specialty Greases**

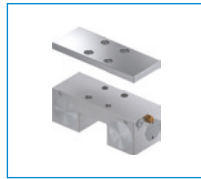
► CUSTOMIZABLE SERIES



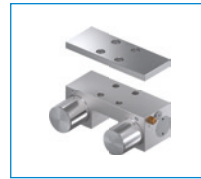
Series HK
Clamping element



Series HKR
Clamping element



Series MK
Clamping element



Series MKS
Clamping element



Series MKRS
Clamping element

► APPLICATION DESCRIPTION

- By using stainless steel for all components that are exposed to external influences, clamping elements can also be used in areas with special hygiene or cleaning requirements.
- Cleanroom certification extends the range of applications accordingly.