

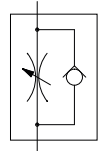
# FLOW CONTROL VALVES - WITH SWIVEL JOINT

## SERIES DRV

### ▶ PRODUCT SPECIFICATIONS



- ▶ Configurable flow control valves for regulating the exhaust air
- ▶ Optimal for regulating the speeds during piston movements
- ▶ Angled version



### ▶ Technical Data

Order no.	DRVM5X4	DRV1-8X6	DRV1-8X8	DRV1-4X8
Fixing thread	M5	G1/8"	G1/8"	G1/4"
Outside-Ø for hose [mm]	4	6	8	8
S [mm]	8	14	14	17
Dimension L1 [mm]	21.5	29	29	31
Dimension L2 [mm]	17	23.5	21.5	25.5
Dimension L3 [mm]	7.5	11	11	12
Dimension i [mm]	4	6	6	7.5
Operating pressure [bar]	2 ... 10	2 ... 10	2 ... 10	2 ... 10
Operating temperature [°C]	+5 ... +80	+5 ... +80	+5 ... +80	+5 ... +80

