

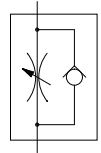
# FLOW CONTROL VALVES - INLINE

## SERIES DRV

### ▶ PRODUCT SPECIFICATIONS



- ▶ Configurable flow control valves for regulating the exhaust air
- ▶ Optimal for regulating the speeds during piston movements



### ▶ Technical Data

Order no.	DRV1-4I	DRV1-8I
Fixing thread	G1/4"	G1/8"
Dimension i [mm]	12	8
Dimension L [mm]	52	32
Dimension L1 [mm]	58	48
Dimension M [mm]	M20x1.5	M12x1
Dimension H [mm]	20	16
Dimension m [mm]	34	24
Dimension d [mm]	6.3	4.3
Operating pressure [bar]	2 ... 10	2 ... 10
Operating temperature [°C]	+5 ... +80	+5 ... +80

